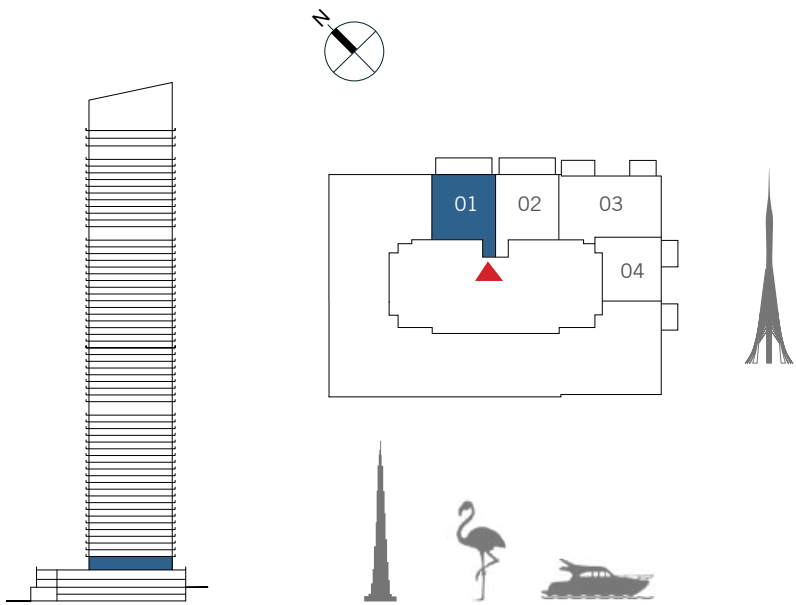


1 BEDROOM

UNIT 01 | LEVEL 02

SUITE AREA	730.98 SQ.FT.	67.91 SQ.M.
BALCONY AREA	167.92 SQ.FT.	15.60 SQ.M.
TOTAL AREA	898.90 SQ.FT.	83.51 SQ.M.



FLOOR PLAN 1. All dimensions are in imperial and metric, and measured from finish to finish excluding construction tolerances. 2. All materials, dimensions, and drawings are approximate only. 3. Information is subject to change without notice, at developer’s absolute discretion. 4. Actual area may vary from the stated area. 5. Drawings not to scale. 6. All images used are for illustrative purposes only and do not represent the actual size, features, specifications, fittings, and furnishings. 7. The developer reserves the right to make revisions / alterations, at it’s absolute discretion, without any liability whatsoever.

DUBAI CREEK
HARBOUR

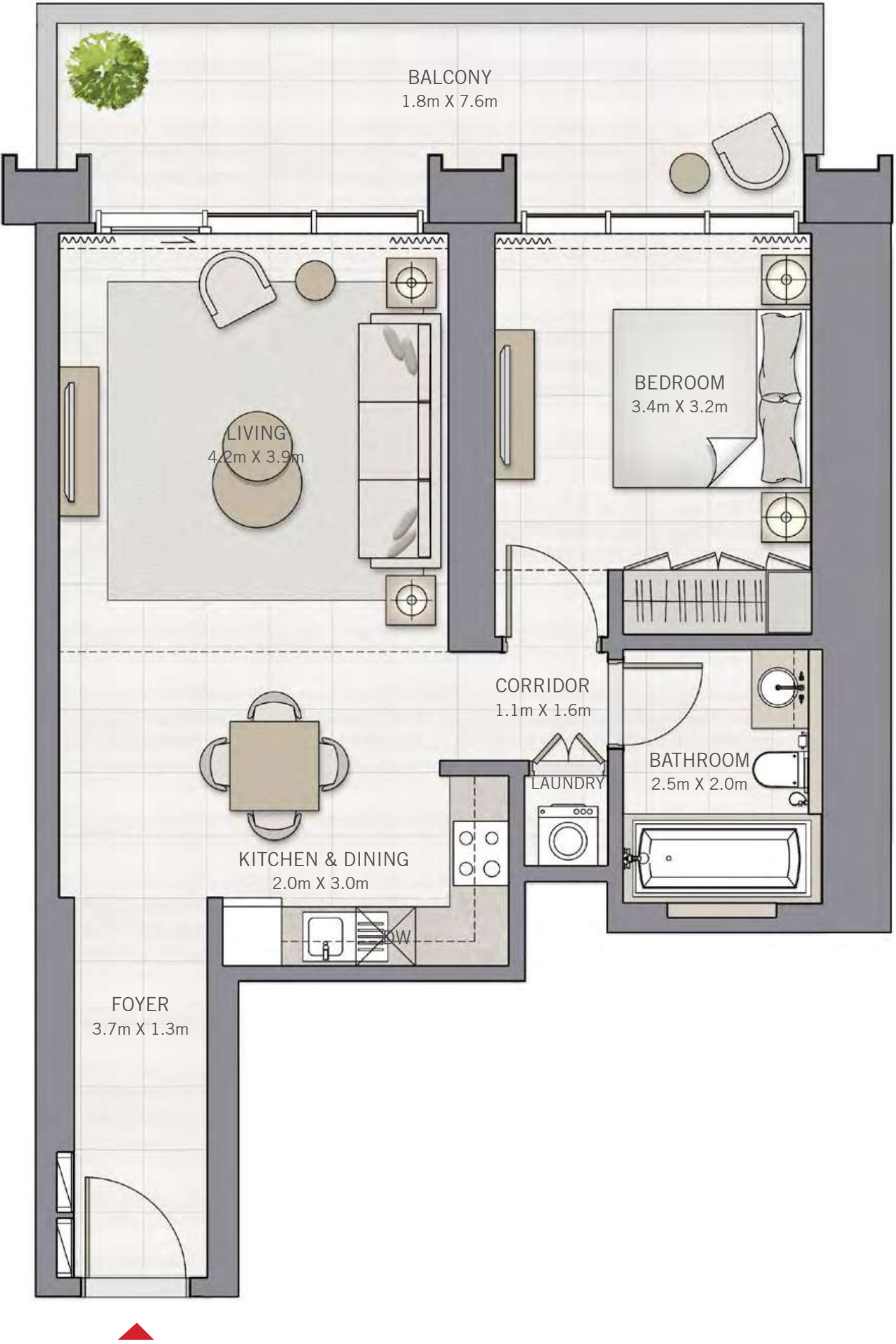
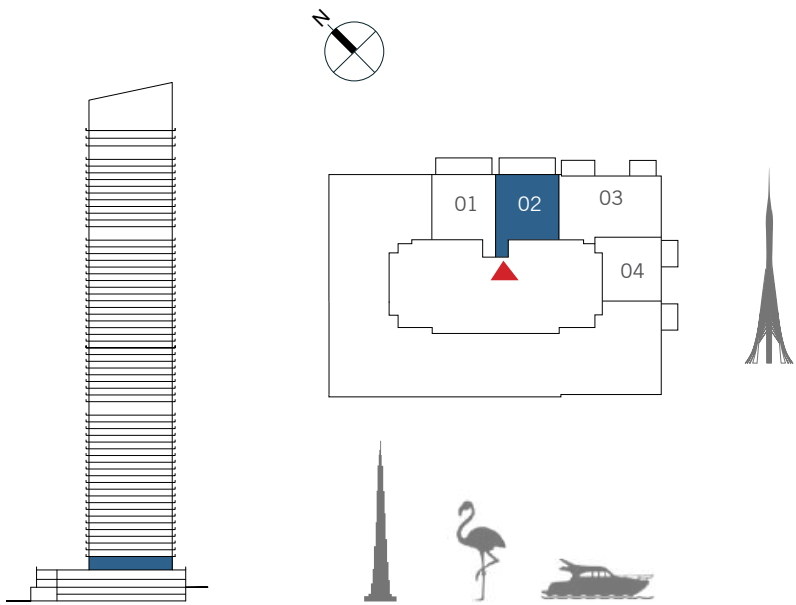
THE
GRAND

SECOND FLOOR

1 BEDROOM

UNIT 02 | LEVEL 02

SUITE AREA	730.98 SQ.FT.	67.91 SQ.M.
BALCONY AREA	173.94 SQ.FT.	16.16 SQ.M.
TOTAL AREA	904.92 SQ.FT.	84.07 SQ.M.



FLOOR PLAN 1. All dimensions are in imperial and metric, and measured from finish to finish excluding construction tolerances. 2. All materials, dimensions, and drawings are approximate only. 3. Information is subject to change without notice, at developer's absolute discretion. 4. Actual area may vary from the stated area. 5. Drawings not to scale. 6. All images used are for illustrative purposes only and do not represent the actual size, features, specifications, fittings, and furnishings. 7. The developer reserves the right to make revisions / alterations, at it's absolute discretion, without any liability whatsoever.



DUBAI CREEK
HARBOUR

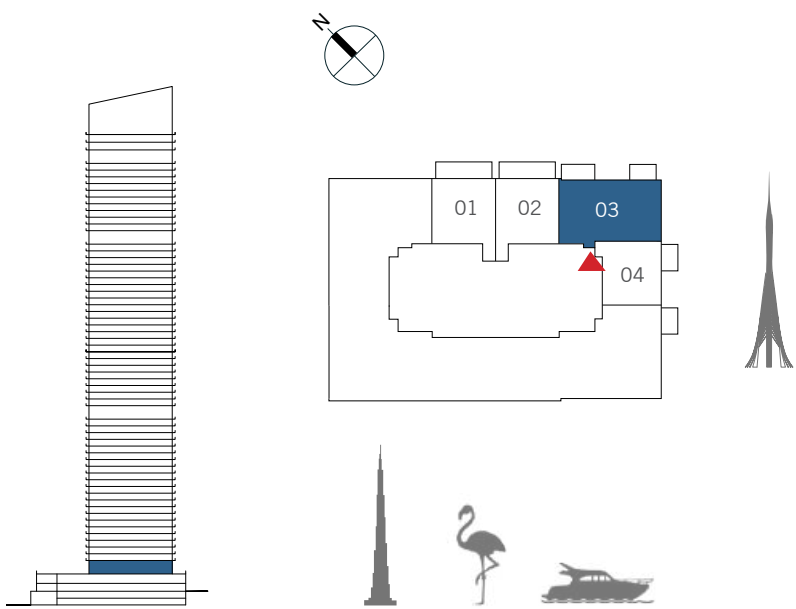
THE
GRAND

SECOND FLOOR

2 BEDROOM

UNIT 03 | LEVEL 02

SUITE AREA	1090.28 SQ.FT.	101.29 SQ.M.
BALCONY AREA	191.71 SQ.FT.	17.81 SQ.M.
TOTAL AREA	1281.99 SQ.FT.	119.10 SQ.M.



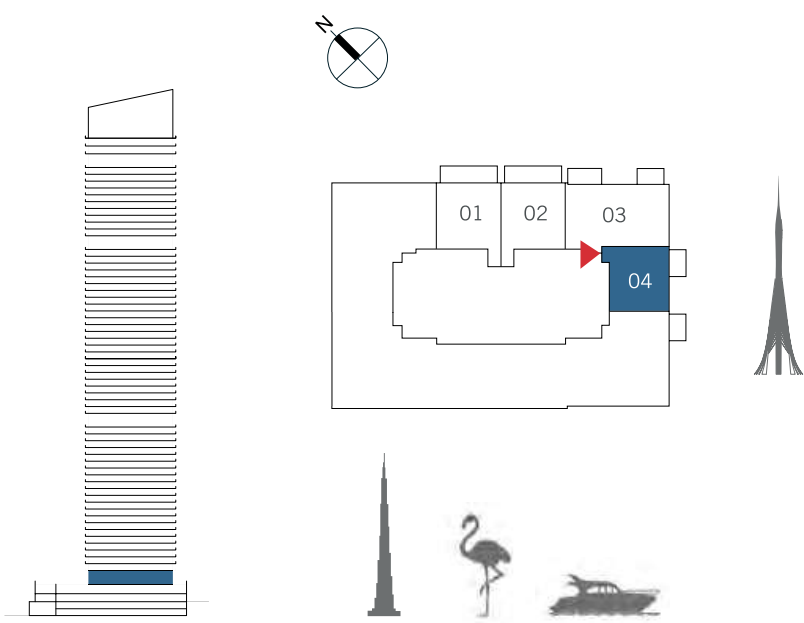
FLOOR PLAN 1. All dimensions are in imperial and metric, and measured from finish to finish excluding construction tolerances. 2. All materials, dimensions, and drawings are approximate only. 3. Information is subject to change without notice, at developer’s absolute discretion. 4. Actual area may vary from the stated area. 5. Drawings not to scale. 6. All images used are for illustrative purposes only and do not represent the actual size, features, specifications, fittings, and furnishings. 7. The developer reserves the right to make revisions / alterations, at it’s absolute discretion, without any liability whatsoever.



1 BEDROOM

UNIT 04 | LEVEL 02

SUITE AREA	749.28 SQ.FT.	69.61 SQ.M.
BALCONY AREA	67.49 SQ.FT.	6.27 SQ.M.
TOTAL AREA	816.77 SQ.FT.	75.88 SQ.M.



FLOOR PLAN 1. All dimensions are in imperial and metric, and measured from finish to finish excluding construction tolerances. 2. All materials, dimensions, and drawings are approximate only. 3. Information is subject to change without notice, at developer's absolute discretion. 4. Actual area may vary from the stated area. 5. Drawings not to scale. 6. All images used are for illustrative purposes only and do not represent the actual size, features, specifications, fittings, and furnishings. 7. The developer reserves the right to make revisions / alterations, at it's absolute discretion, without any liability whatsoever.

DUBAI CREEK
HARBOUR

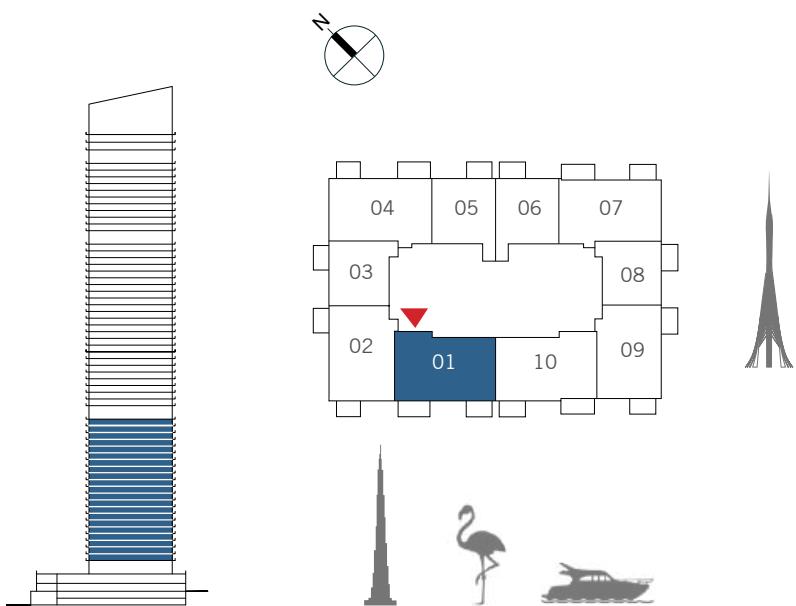
THE
GRAND

FLOOR PLANS

2 BEDROOM

UNIT 01 | LEVEL 3-23

SUITE AREA	1167.88 SQ.FT.	108.50 SQ.M.
BALCONY AREA	147.04 SQ.FT.	13.66 SQ.M.
TOTAL AREA	1314.92 SQ.FT.	122.16 SQ.M.



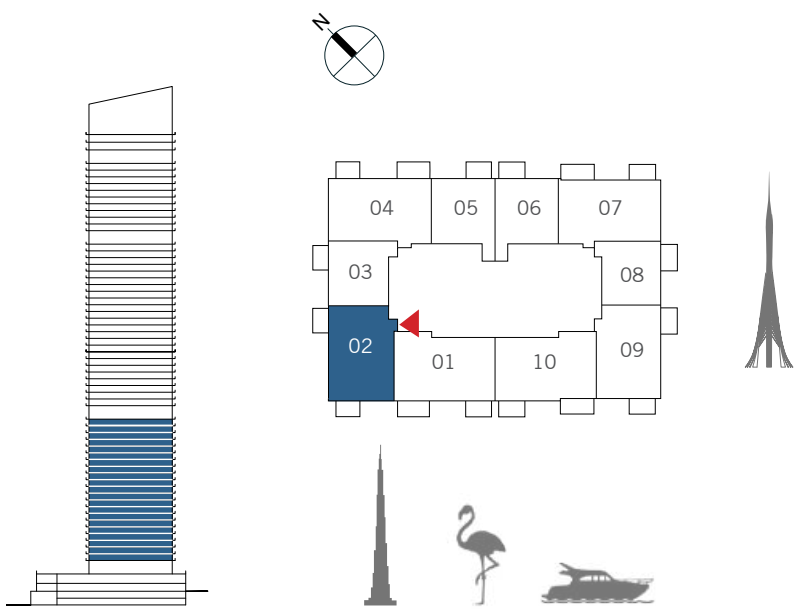
FLOOR PLAN 1. All dimensions are in imperial and metric, and measured from finish to finish excluding construction tolerances. 2. All materials, dimensions, and drawings are approximate only. 3. Information is subject to change without notice, at developer’s absolute discretion. 4. Actual area may vary from the stated area. 5. Drawings not to scale. 6. All images used are for illustrative purposes only and do not represent the actual size, features, specifications, fittings, and furnishings. 7. The developer reserves the right to make revisions / alterations, at it’s absolute discretion, without any liability whatsoever.



2 BEDROOM

UNIT 02 | LEVEL 3-23

SUITE AREA	1121.81 SQ.FT.	104.22 SQ.M.
BALCONY AREA	121.09 SQ.FT.	11.25 SQ.M.
TOTAL AREA	1242.90 SQ.FT.	115.47 SQ.M.

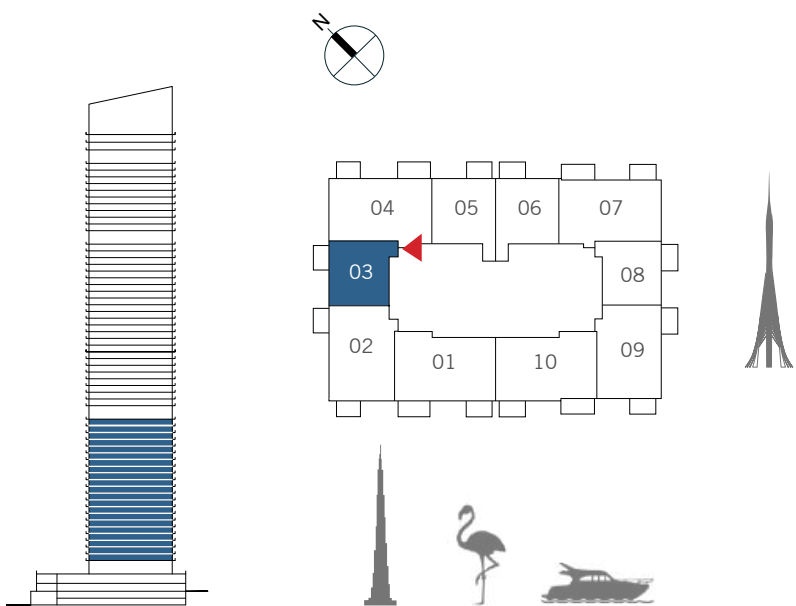


FLOOR PLAN 1. All dimensions are in imperial and metric, and measured from finish to finish excluding construction tolerances. 2. All materials, dimensions, and drawings are approximate only. 3. Information is subject to change without notice, at developer’s absolute discretion. 4. Actual area may vary from the stated area. 5. Drawings not to scale. 6. All images used are for illustrative purposes only and do not represent the actual size, features, specifications, fittings, and furnishings. 7. The developer reserves the right to make revisions / alterations, at it’s absolute discretion, without any liability whatsoever.

1 BEDROOM

UNIT 03 | LEVEL 3-23

SUITE AREA	737.22 SQ.FT.	68.49 SQ.M.
BALCONY AREA	61.03 SQ.FT.	5.67 SQ.M.
TOTAL AREA	798.25 SQ.FT.	74.16 SQ.M.



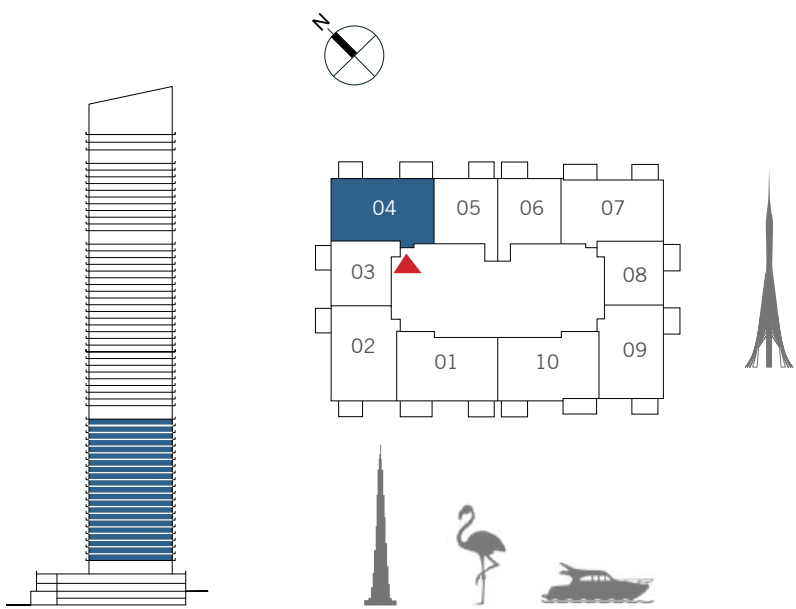
FLOOR PLAN 1. All dimensions are in imperial and metric, and measured from finish to finish excluding construction tolerances. 2. All materials, dimensions, and drawings are approximate only. 3. Information is subject to change without notice, at developer's absolute discretion. 4. Actual area may vary from the stated area. 5. Drawings not to scale. 6. All images used are for illustrative purposes only and do not represent the actual size, features, specifications, fittings, and furnishings. 7. The developer reserves the right to make revisions / alterations, at it's absolute discretion, without any liability whatsoever.

FLOOR PLANS

2 BEDROOM

UNIT 04 | LEVEL 3-23

SUITE AREA	1158.30 SQ.FT.	107.61 SQ.M.
BALCONY AREA	140.90 SQ.FT.	13.09 SQ.M.
TOTAL AREA	1299.20 SQ.FT.	120.70 SQ.M.

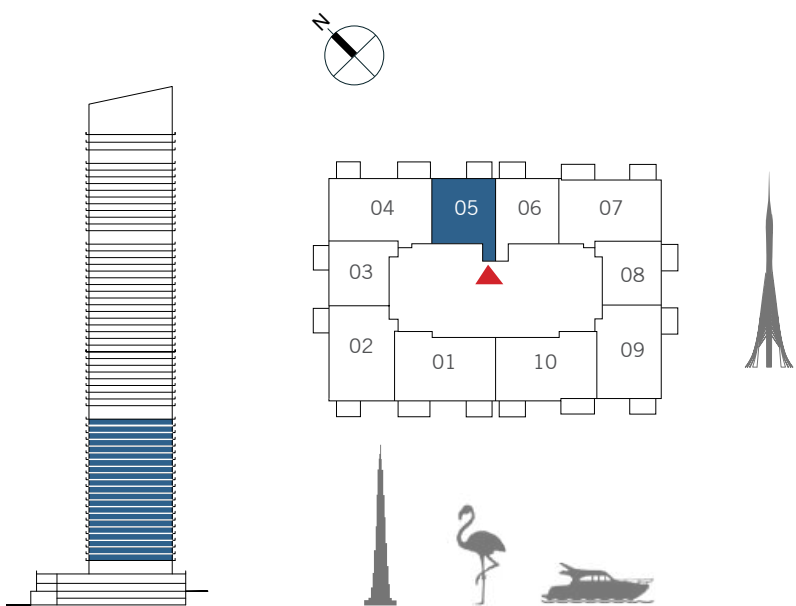


FLOOR PLAN 1. All dimensions are in imperial and metric, and measured from finish to finish excluding construction tolerances. 2. All materials, dimensions, and drawings are approximate only. 3. Information is subject to change without notice, at developer’s absolute discretion. 4. Actual area may vary from the stated area. 5. Drawings not to scale. 6. All images used are for illustrative purposes only and do not represent the actual size, features, specifications, fittings, and furnishings. 7. The developer reserves the right to make revisions / alterations, at it’s absolute discretion, without any liability whatsoever.

1 BEDROOM

UNIT 05 | LEVEL 3-23

SUITE AREA	735.18 SQ.FT.	68.30 SQ.M.
BALCONY AREA	66.20 SQ.FT.	6.15 SQ.M.
TOTAL AREA	801.38 SQ.FT.	74.45 SQ.M.

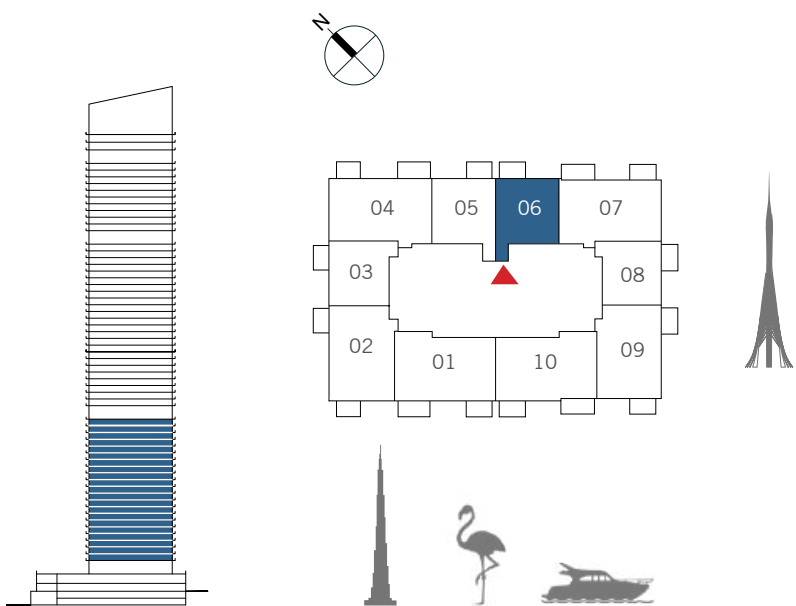


FLOOR PLAN 1. All dimensions are in imperial and metric, and measured from finish to finish excluding construction tolerances. 2. All materials, dimensions, and drawings are approximate only. 3. Information is subject to change without notice, at developer’s absolute discretion. 4. Actual area may vary from the stated area. 5. Drawings not to scale. 6. All images used are for illustrative purposes only and do not represent the actual size, features, specifications, fittings, and furnishings. 7. The developer reserves the right to make revisions / alterations, at it’s absolute discretion, without any liability whatsoever.

1 BEDROOM

UNIT 06 | LEVEL 3-23

SUITE AREA	735.18 SQ.FT.	68.30 SQ.M.
BALCONY AREA	66.20 SQ.FT.	6.15 SQ.M.
TOTAL AREA	801.38 SQ.FT.	74.45 SQ.M.

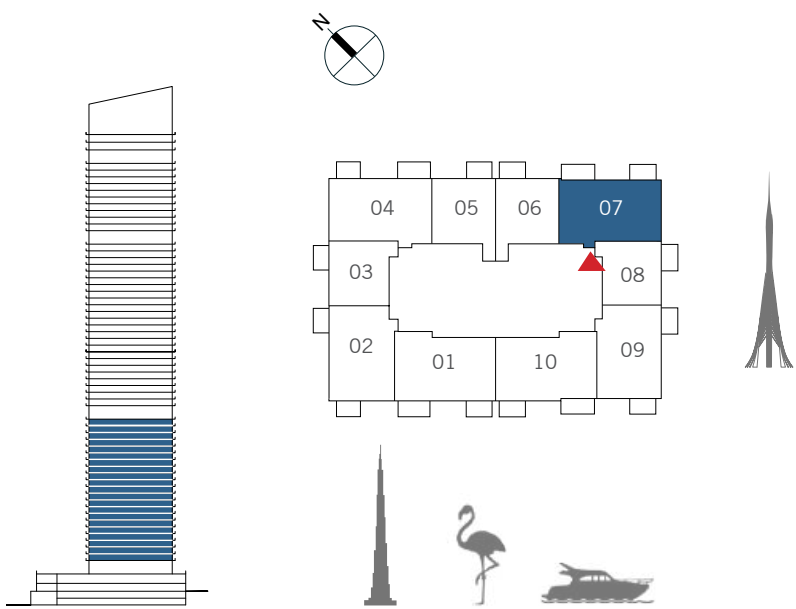


FLOOR PLAN 1. All dimensions are in imperial and metric, and measured from finish to finish excluding construction tolerances. 2. All materials, dimensions, and drawings are approximate only. 3. Information is subject to change without notice, at developer's absolute discretion. 4. Actual area may vary from the stated area. 5. Drawings not to scale. 6. All images used are for illustrative purposes only and do not represent the actual size, features, specifications, fittings, and furnishings. 7. The developer reserves the right to make revisions / alterations, at it's absolute discretion, without any liability whatsoever.

2 BEDROOM

UNIT 07 | LEVEL 3-23

SUITE AREA	1118.16 SQ.FT.	103.88 SQ.M.
BALCONY AREA	149.62 SQ.FT.	13.90 SQ.M.
TOTAL AREA	1267.78 SQ.FT.	117.78 SQ.M.



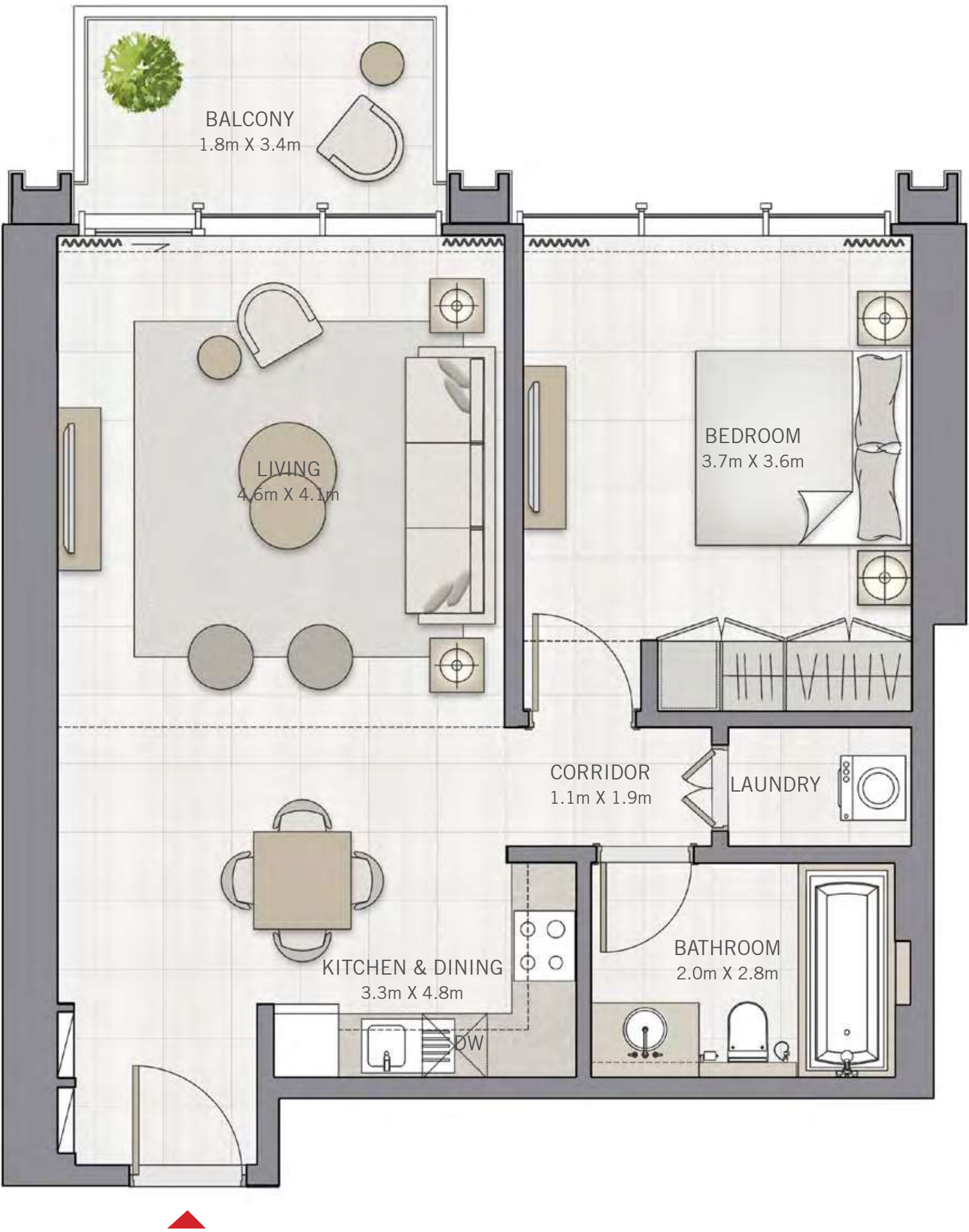
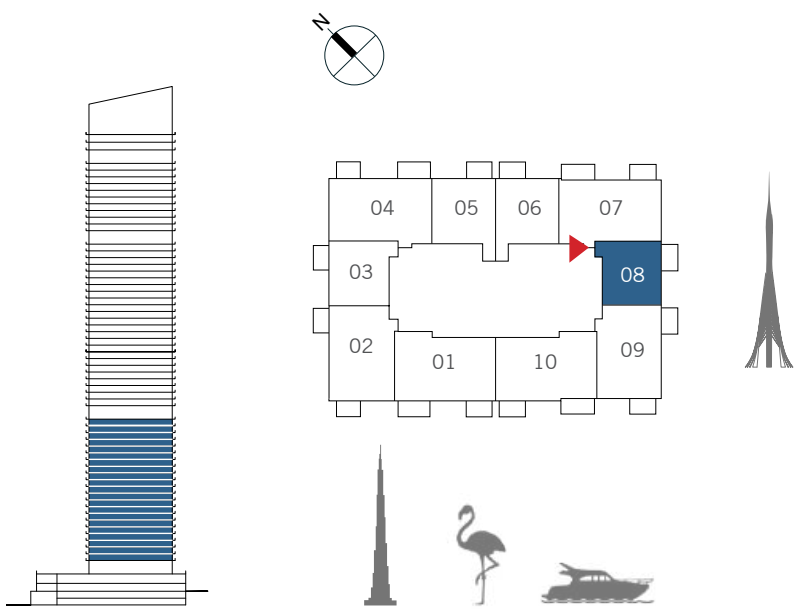
FLOOR PLAN 1. All dimensions are in imperial and metric, and measured from finish to finish excluding construction tolerances. 2. All materials, dimensions, and drawings are approximate only. 3. Information is subject to change without notice, at developer's absolute discretion. 4. Actual area may vary from the stated area. 5. Drawings not to scale. 6. All images used are for illustrative purposes only and do not represent the actual size, features, specifications, fittings, and furnishings. 7. The developer reserves the right to make revisions / alterations, at it's absolute discretion, without any liability whatsoever.

FLOOR PLANS

1 BEDROOM

UNIT 08 | LEVEL 3-23

SUITE AREA	737.87 SQ.FT.	68.55 SQ.M.
BALCONY AREA	66.52 SQ.FT.	6.18 SQ.M.
TOTAL AREA	804.39 SQ.FT.	74.73 SQ.M.



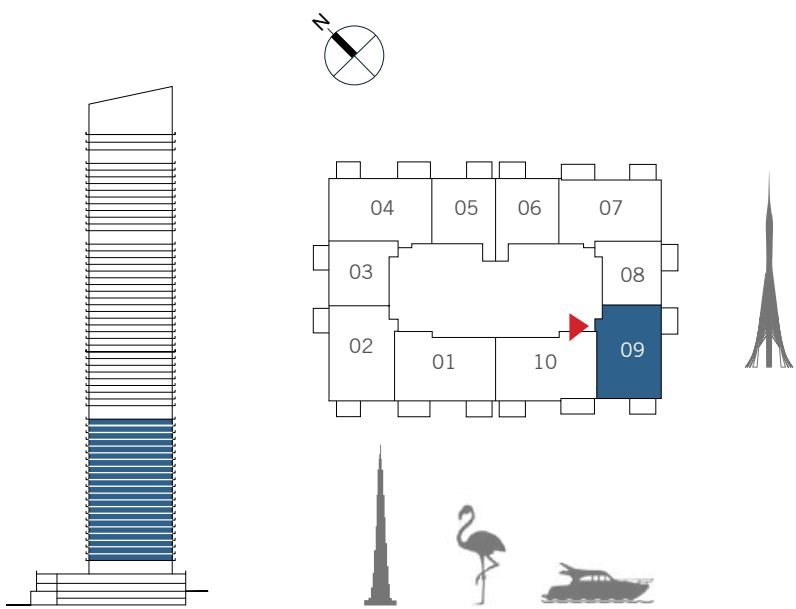
FLOOR PLAN 1. All dimensions are in imperial and metric, and measured from finish to finish excluding construction tolerances. 2. All materials, dimensions, and drawings are approximate only. 3. Information is subject to change without notice, at developer's absolute discretion. 4. Actual area may vary from the stated area. 5. Drawings not to scale. 6. All images used are for illustrative purposes only and do not represent the actual size, features, specifications, fittings, and furnishings. 7. The developer reserves the right to make revisions / alterations, at it's absolute discretion, without any liability whatsoever.

FLOOR PLANS

2 BEDROOM

UNIT 09 | LEVEL 3-23

SUITE AREA	1095.98 SQ.FT.	101.82 SQ.M.
BALCONY AREA	132.07 SQ.FT.	12.27 SQ.M.
TOTAL AREA	1228.05 SQ.FT.	114.09 SQ.M.



FLOOR PLAN 1. All dimensions are in imperial and metric, and measured from finish to finish excluding construction tolerances. 2. All materials, dimensions, and drawings are approximate only. 3. Information is subject to change without notice, at developer's absolute discretion. 4. Actual area may vary from the stated area. 5. Drawings not to scale. 6. All images used are for illustrative purposes only and do not represent the actual size, features, specifications, fittings, and furnishings. 7. The developer reserves the right to make revisions / alterations, at it's absolute discretion, without any liability whatsoever.

DUBAI CREEK
HARBOUR

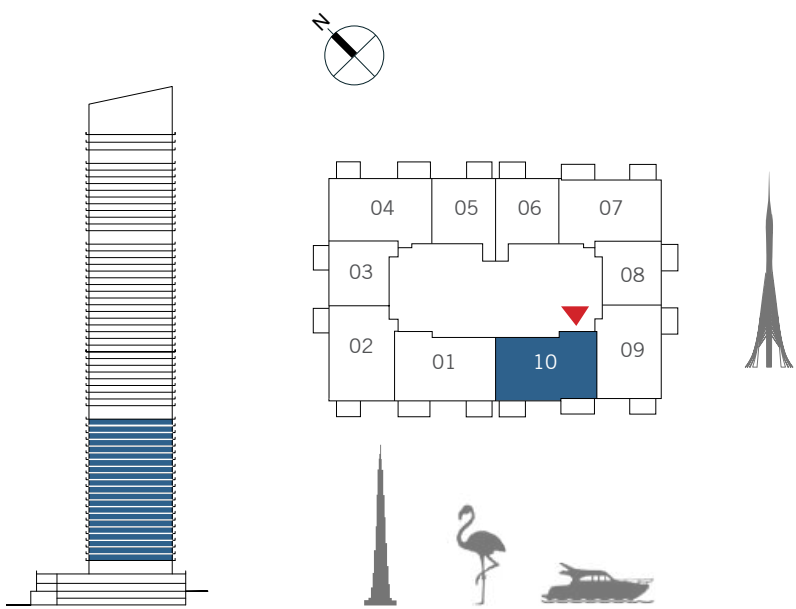
THE
GRAND

FLOOR PLANS

2 BEDROOM

UNIT 10 | LEVEL 3-23

SUITE AREA	1153.14 SQ.FT.	107.13 SQ.M.
BALCONY AREA	150.16 SQ.FT.	13.95 SQ.M.
TOTAL AREA	1303.30 SQ.FT.	121.08 SQ.M.



FLOOR PLAN 1. All dimensions are in imperial and metric, and measured from finish to finish excluding construction tolerances. 2. All materials, dimensions, and drawings are approximate only. 3. Information is subject to change without notice, at developer's absolute discretion. 4. Actual area may vary from the stated area. 5. Drawings not to scale. 6. All images used are for illustrative purposes only and do not represent the actual size, features, specifications, fittings, and furnishings. 7. The developer reserves the right to make revisions / alterations, at it's absolute discretion, without any liability whatsoever.



DUBAI CREEK
HARBOUR

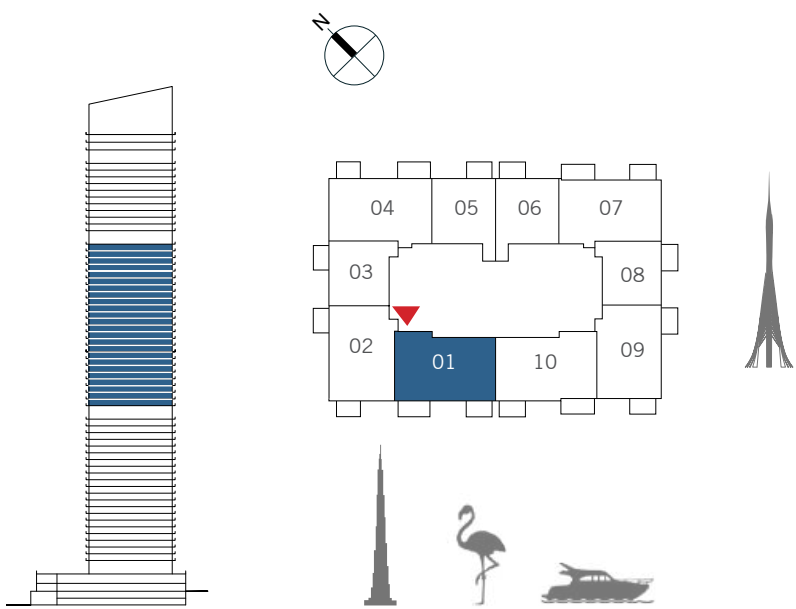
THE
GRAND

FLOOR PLANS

2 BEDROOM

UNIT 01 | LEVEL 25-48

SUITE AREA	1182.31 SQ.FT.	109.84 SQ.M.
BALCONY AREA	147.04 SQ.FT.	13.66 SQ.M.
TOTAL AREA	1329.35 SQ.FT.	123.50 SQ.M.



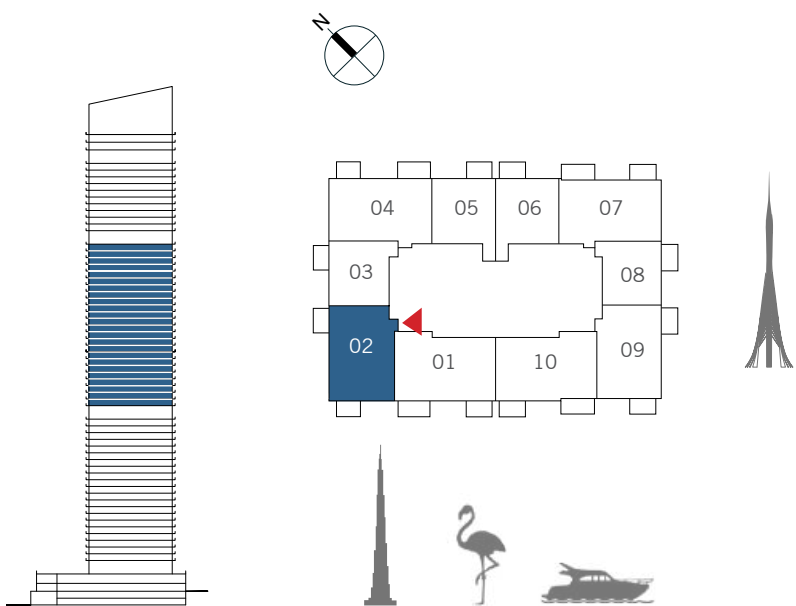
FLOOR PLAN 1. All dimensions are in imperial and metric, and measured from finish to finish excluding construction tolerances. 2. All materials, dimensions, and drawings are approximate only. 3. Information is subject to change without notice, at developer’s absolute discretion. 4. Actual area may vary from the stated area. 5. Drawings not to scale. 6. All images used are for illustrative purposes only and do not represent the actual size, features, specifications, fittings, and furnishings. 7. The developer reserves the right to make revisions / alterations, at it’s absolute discretion, without any liability whatsoever.



2 BEDROOM

UNIT 02 | LEVEL 25-48

SUITE AREA	1123.75 SQ.FT.	104.40 SQ.M.
BALCONY AREA	121.09 SQ.FT.	11.25 SQ.M.
TOTAL AREA	1244.84 SQ.FT.	115.65 SQ.M.

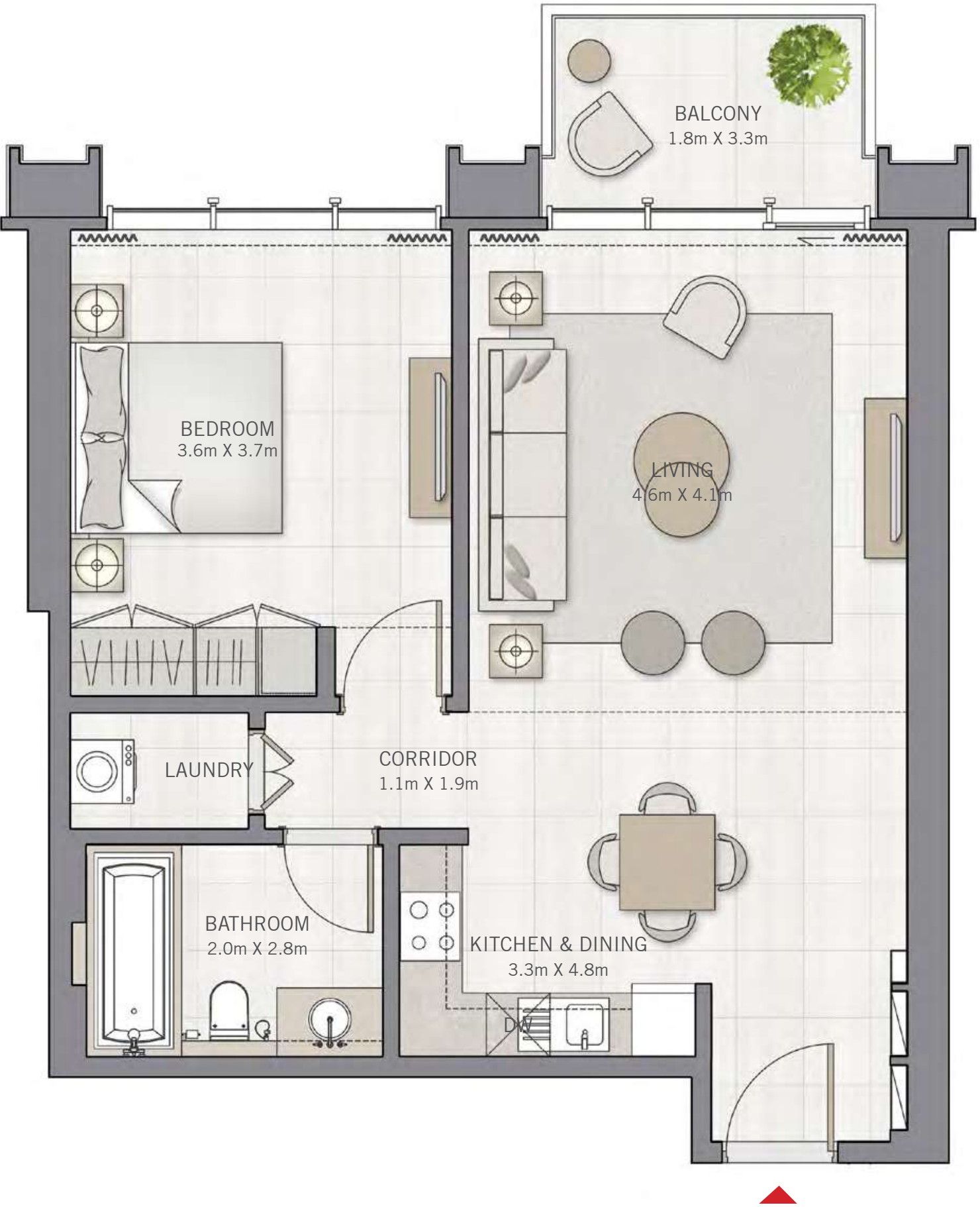
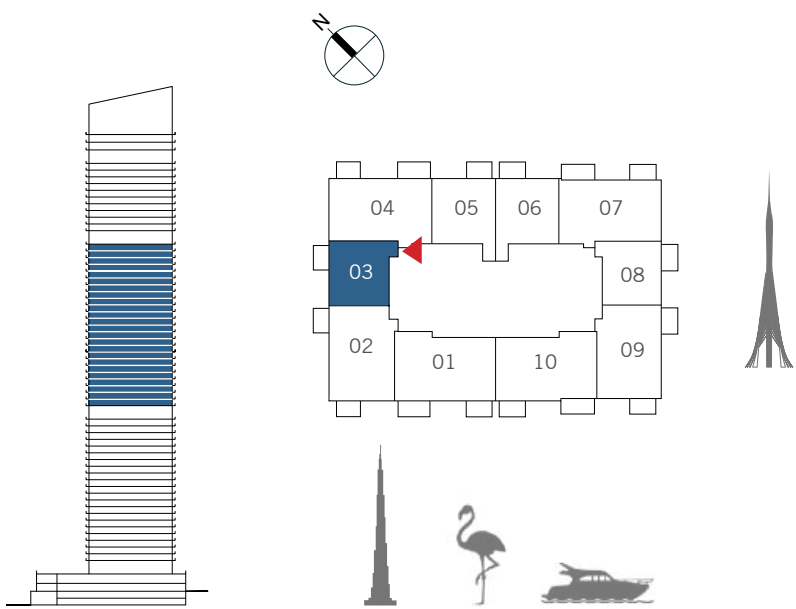


FLOOR PLAN 1. All dimensions are in imperial and metric, and measured from finish to finish excluding construction tolerances. 2. All materials, dimensions, and drawings are approximate only. 3. Information is subject to change without notice, at developer's absolute discretion. 4. Actual area may vary from the stated area. 5. Drawings not to scale. 6. All images used are for illustrative purposes only and do not represent the actual size, features, specifications, fittings, and furnishings. 7. The developer reserves the right to make revisions / alterations, at it's absolute discretion, without any liability whatsoever.

1 BEDROOM

UNIT 03 | LEVEL 25-48

SUITE AREA	730.76 SQ.FT.	67.89 SQ.M.
BALCONY AREA	61.03 SQ.FT.	5.67 SQ.M.
TOTAL AREA	791.79 SQ.FT.	73.56 SQ.M.



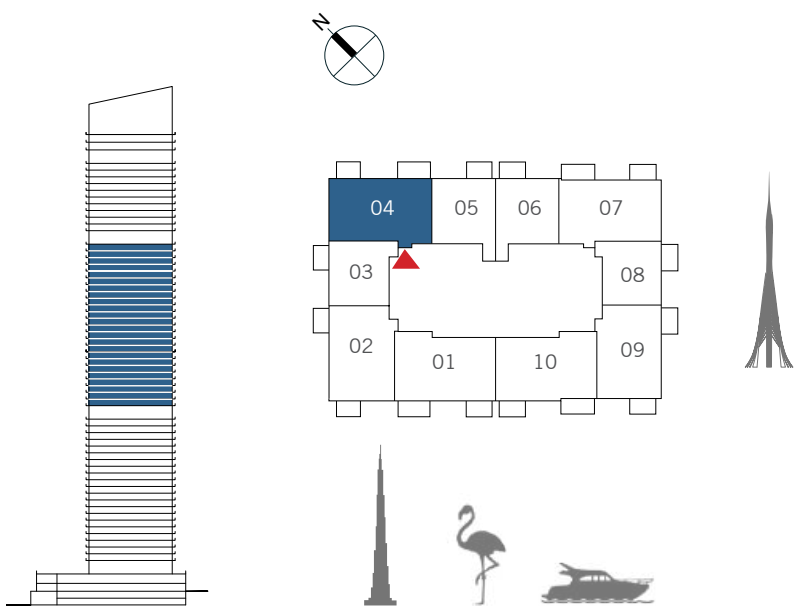
FLOOR PLAN 1. All dimensions are in imperial and metric, and measured from finish to finish excluding construction tolerances. 2. All materials, dimensions, and drawings are approximate only. 3. Information is subject to change without notice, at developer's absolute discretion. 4. Actual area may vary from the stated area. 5. Drawings not to scale. 6. All images used are for illustrative purposes only and do not represent the actual size, features, specifications, fittings, and furnishings. 7. The developer reserves the right to make revisions / alterations, at it's absolute discretion, without any liability whatsoever.

FLOOR PLANS

2 BEDROOM

UNIT 04 | LEVEL 25-48

SUITE AREA	1176.60 SQ.FT.	109.31 SQ.M.
BALCONY AREA	140.90 SQ.FT.	13.09 SQ.M.
TOTAL AREA	1317.50 SQ.FT.	122.40 SQ.M.

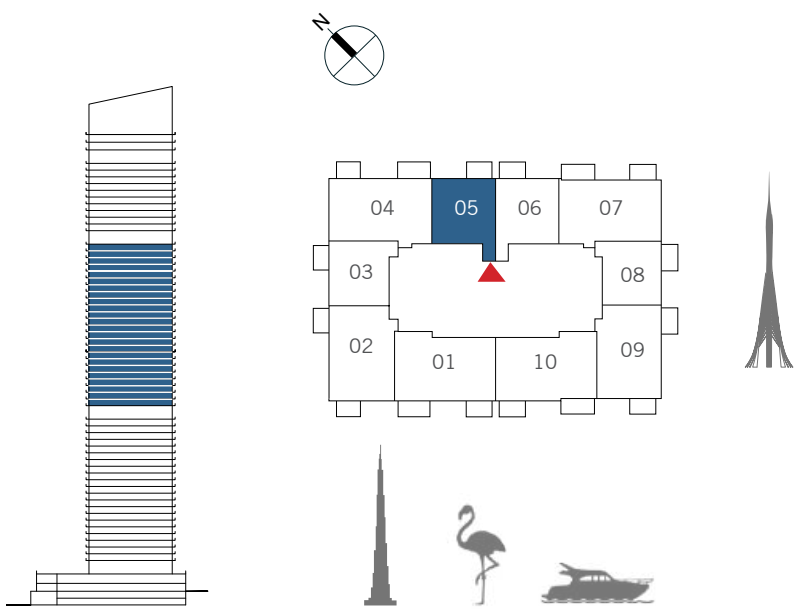


FLOOR PLAN 1. All dimensions are in imperial and metric, and measured from finish to finish excluding construction tolerances. 2. All materials, dimensions, and drawings are approximate only. 3. Information is subject to change without notice, at developer’s absolute discretion. 4. Actual area may vary from the stated area. 5. Drawings not to scale. 6. All images used are for illustrative purposes only and do not represent the actual size, features, specifications, fittings, and furnishings. 7. The developer reserves the right to make revisions / alterations, at it’s absolute discretion, without any liability whatsoever.

1 BEDROOM

UNIT 05 | LEVEL 25-48

SUITE AREA	737.87 SQ.FT.	68.55 SQ.M.
BALCONY AREA	66.20 SQ.FT.	6.15 SQ.M.
TOTAL AREA	804.07 SQ.FT.	74.70 SQ.M.

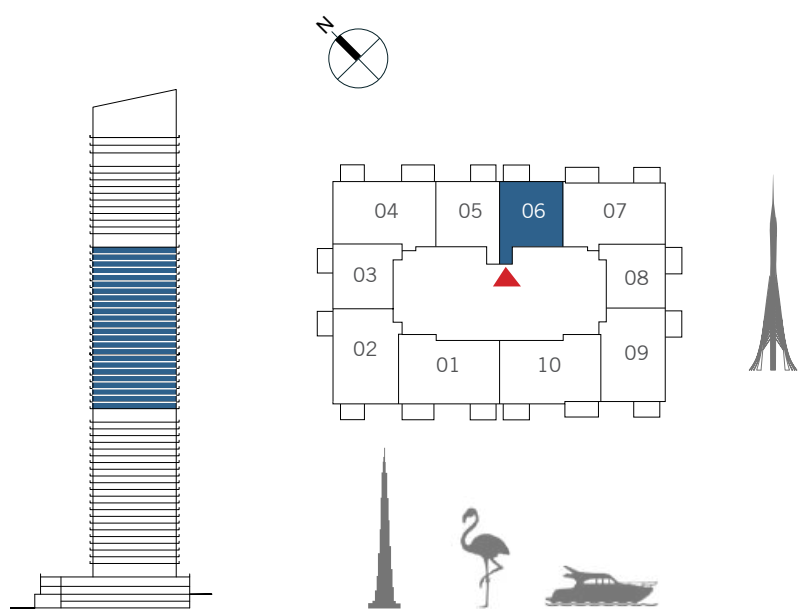


FLOOR PLAN 1. All dimensions are in imperial and metric, and measured from finish to finish excluding construction tolerances. 2. All materials, dimensions, and drawings are approximate only. 3. Information is subject to change without notice, at developer’s absolute discretion. 4. Actual area may vary from the stated area. 5. Drawings not to scale. 6. All images used are for illustrative purposes only and do not represent the actual size, features, specifications, fittings, and furnishings. 7. The developer reserves the right to make revisions / alterations, at it’s absolute discretion, without any liability whatsoever.

1 BEDROOM

UNIT 06 | LEVEL 25-48

SUITE AREA	737.87 SQ.FT.	68.55 SQ.M.
BALCONY AREA	66.20 SQ.FT.	6.15 SQ.M.
TOTAL AREA	804.07 SQ.FT.	74.70 SQ.M.



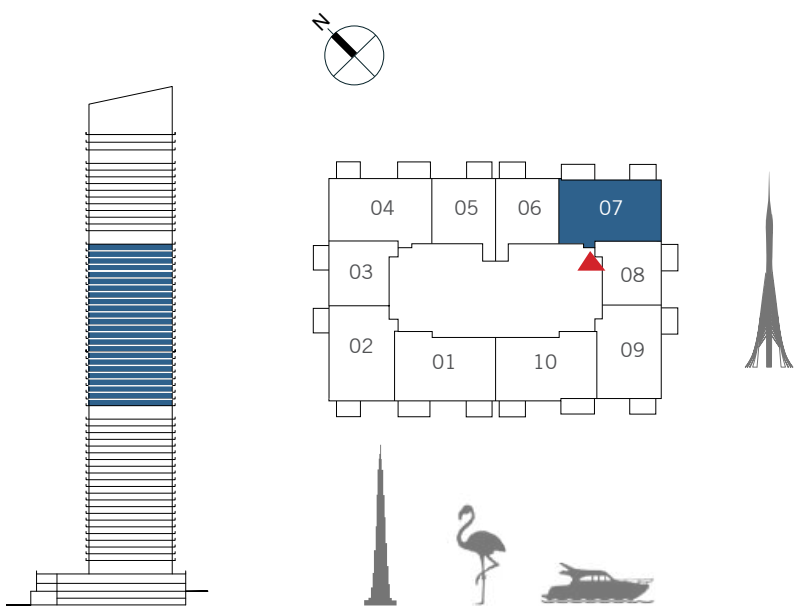
FLOOR PLAN 1. All dimensions are in imperial and metric, and measured from finish to finish excluding construction tolerances. 2. All materials, dimensions, and drawings are approximate only. 3. Information is subject to change without notice, at developer's absolute discretion. 4. Actual area may vary from the stated area. 5. Drawings not to scale. 6. All images used are for illustrative purposes only and do not represent the actual size, features, specifications, fittings, and furnishings. 7. The developer reserves the right to make revisions / alterations, at it's absolute discretion, without any liability whatsoever.

FLOOR PLANS

2 BEDROOM

UNIT 07 | LEVEL 25-48

SUITE AREA	1136.67 SQ.FT.	105.60 SQ.M.
BALCONY AREA	149.62 SQ.FT.	13.90 SQ.M.
TOTAL AREA	1286.29 SQ.FT.	119.50 SQ.M.



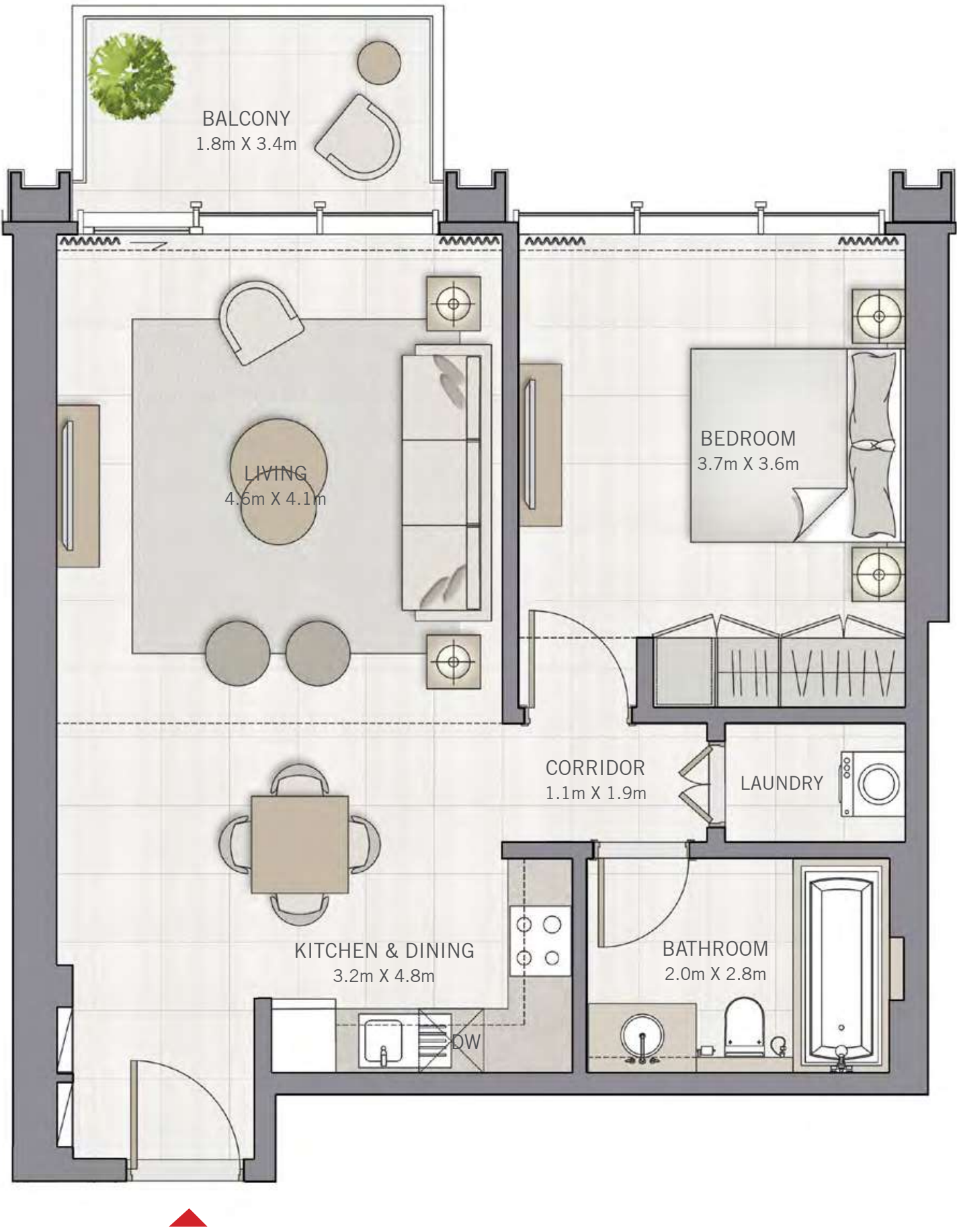
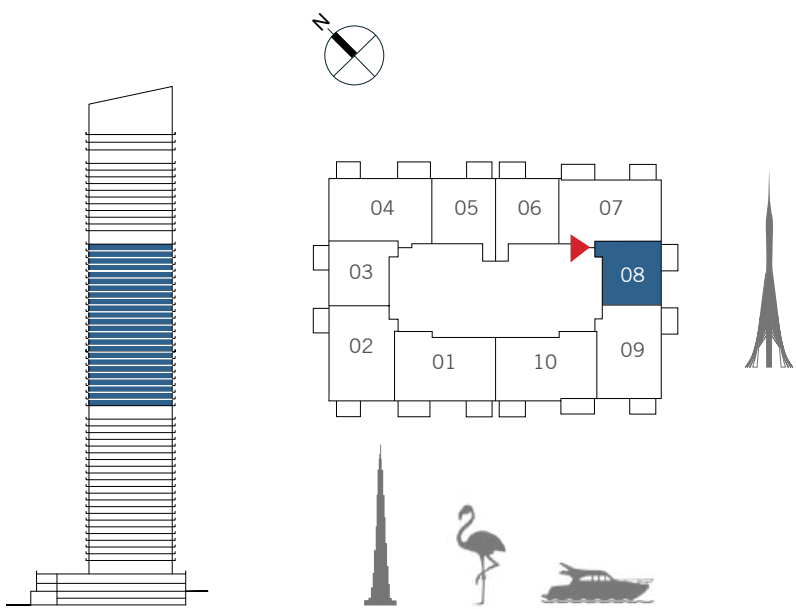
FLOOR PLAN 1. All dimensions are in imperial and metric, and measured from finish to finish excluding construction tolerances. 2. All materials, dimensions, and drawings are approximate only. 3. Information is subject to change without notice, at developer's absolute discretion. 4. Actual area may vary from the stated area. 5. Drawings not to scale. 6. All images used are for illustrative purposes only and do not represent the actual size, features, specifications, fittings, and furnishings. 7. The developer reserves the right to make revisions / alterations, at it's absolute discretion, without any liability whatsoever.

FLOOR PLANS

1 BEDROOM

UNIT 08 | LEVEL 25-48

SUITE AREA	731.30 SQ.FT.	67.94 SQ.M.
BALCONY AREA	66.52 SQ.FT.	6.18 SQ.M.
TOTAL AREA	797.82 SQ.FT.	74.12 SQ.M.



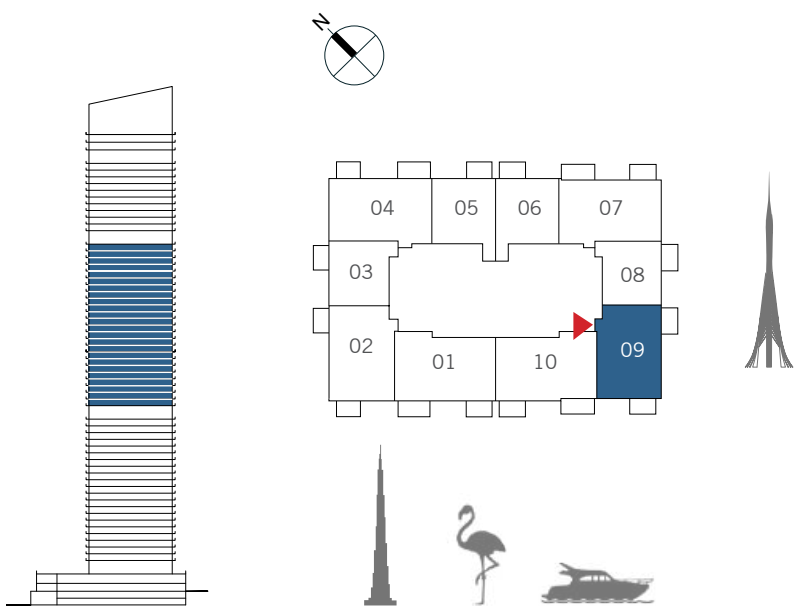
FLOOR PLAN 1. All dimensions are in imperial and metric, and measured from finish to finish excluding construction tolerances. 2. All materials, dimensions, and drawings are approximate only. 3. Information is subject to change without notice, at developer’s absolute discretion. 4. Actual area may vary from the stated area. 5. Drawings not to scale. 6. All images used are for illustrative purposes only and do not represent the actual size, features, specifications, fittings, and furnishings. 7. The developer reserves the right to make revisions / alterations, at it’s absolute discretion, without any liability whatsoever.

FLOOR PLANS

2 BEDROOM

UNIT 09 | LEVEL 25-48

SUITE AREA	1097.92 SQ.FT.	102.00 SQ.M.
BALCONY AREA	132.07 SQ.FT.	12.27 SQ.M.
TOTAL AREA	1229.99 SQ.FT.	114.27 SQ.M.



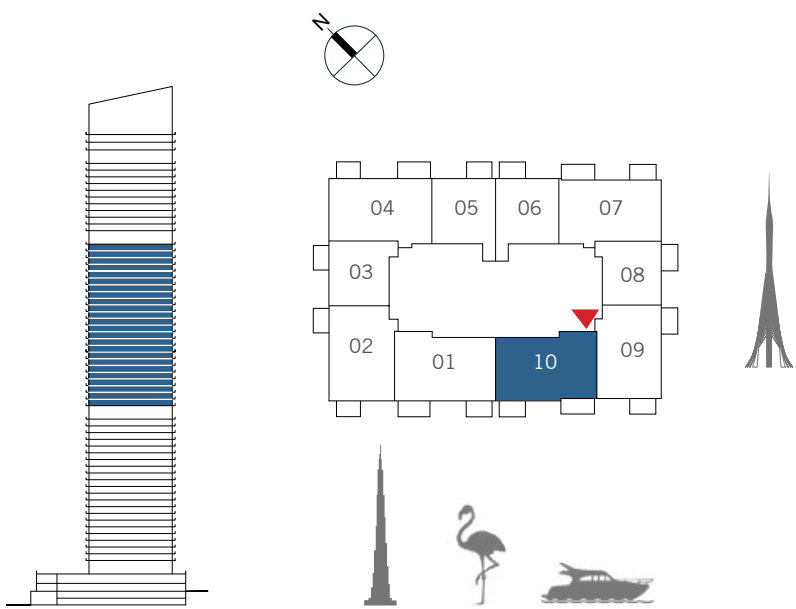
FLOOR PLAN 1. All dimensions are in imperial and metric, and measured from finish to finish excluding construction tolerances. 2. All materials, dimensions, and drawings are approximate only. 3. Information is subject to change without notice, at developer's absolute discretion. 4. Actual area may vary from the stated area. 5. Drawings not to scale. 6. All images used are for illustrative purposes only and do not represent the actual size, features, specifications, fittings, and furnishings. 7. The developer reserves the right to make revisions / alterations, at it's absolute discretion, without any liability whatsoever.

FLOOR PLANS

2 BEDROOM

UNIT 10 | LEVEL 25-48

SUITE AREA	1167.56 SQ.FT.	108.47 SQ.M.
BALCONY AREA	150.16 SQ.FT.	13.95 SQ.M.
TOTAL AREA	1317.72 SQ.FT.	122.42 SQ.M.



FLOOR PLAN 1. All dimensions are in imperial and metric, and measured from finish to finish excluding construction tolerances. 2. All materials, dimensions, and drawings are approximate only. 3. Information is subject to change without notice, at developer's absolute discretion. 4. Actual area may vary from the stated area. 5. Drawings not to scale. 6. All images used are for illustrative purposes only and do not represent the actual size, features, specifications, fittings, and furnishings. 7. The developer reserves the right to make revisions / alterations, at it's absolute discretion, without any liability whatsoever.

DUBAI CREEK
HARBOUR

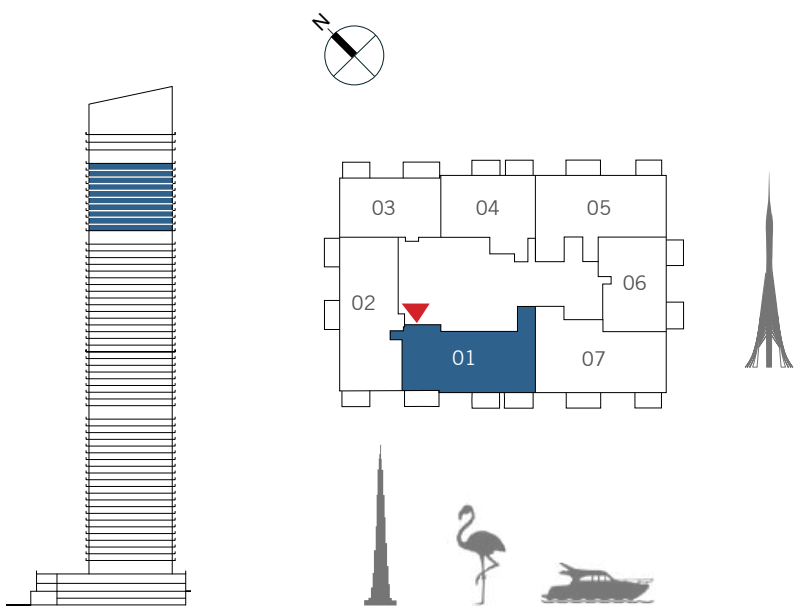
THE
GRAND

FLOOR PLANS

3 BEDROOM

UNIT 01 | LEVEL 50-59

SUITE AREA	1607.37 SQ.FT.	149.33 SQ.M.
BALCONY AREA	232.93 SQ.FT.	21.64 SQ.M.
TOTAL AREA	1840.30 SQ.FT.	170.97 SQ.M.



FLOOR PLAN 1. All dimensions are in imperial and metric, and measured from finish to finish excluding construction tolerances. 2. All materials, dimensions, and drawings are approximate only. 3. Information is subject to change without notice, at developer's absolute discretion. 4. Actual area may vary from the stated area. 5. Drawings not to scale. 6. All images used are for illustrative purposes only and do not represent the actual size, features, specifications, fittings, and furnishings. 7. The developer reserves the right to make revisions / alterations, at it's absolute discretion, without any liability whatsoever.



3 BEDROOM

UNIT 02 | LEVEL 50-59

SUITE AREA	1692.95 SQ.FT.	157.28 SQ.M.
BALCONY AREA	214.85 SQ.FT.	19.96 SQ.M.
TOTAL AREA	1907.80 SQ.FT.	177.24 SQ.M.



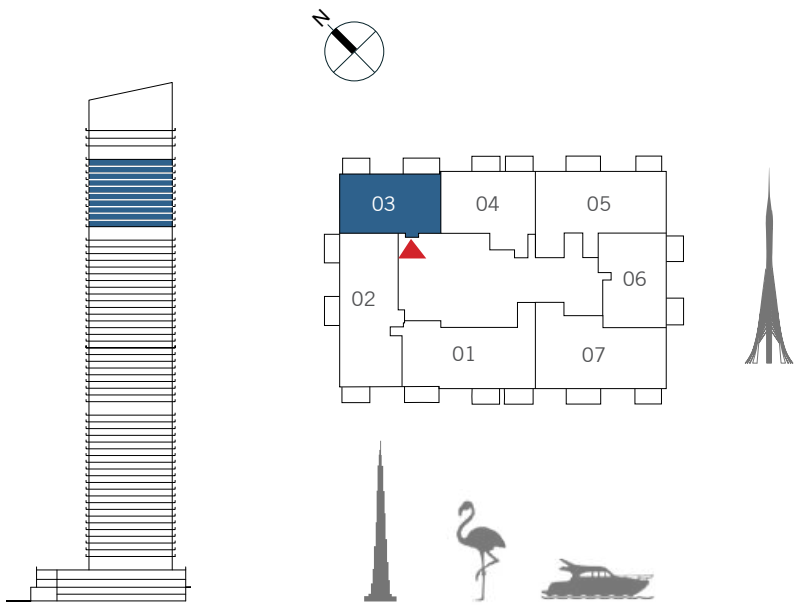
FLOOR PLAN 1. All dimensions are in imperial and metric, and measured from finish to finish excluding construction tolerances. 2. All materials, dimensions, and drawings are approximate only. 3. Information is subject to change without notice, at developer's absolute discretion. 4. Actual area may vary from the stated area. 5. Drawings not to scale. 6. All images used are for illustrative purposes only and do not represent the actual size, features, specifications, fittings, and furnishings. 7. The developer reserves the right to make revisions / alterations, at it's absolute discretion, without any liability whatsoever.

FLOOR PLANS

2 BEDROOM

UNIT 03 | LEVEL 50-59

SUITE AREA	1077.14 SQ.FT.	100.07 SQ.M.
BALCONY AREA	160.92 SQ.FT.	14.95 SQ.M.
TOTAL AREA	1238.06 SQ.FT.	115.02 SQ.M.

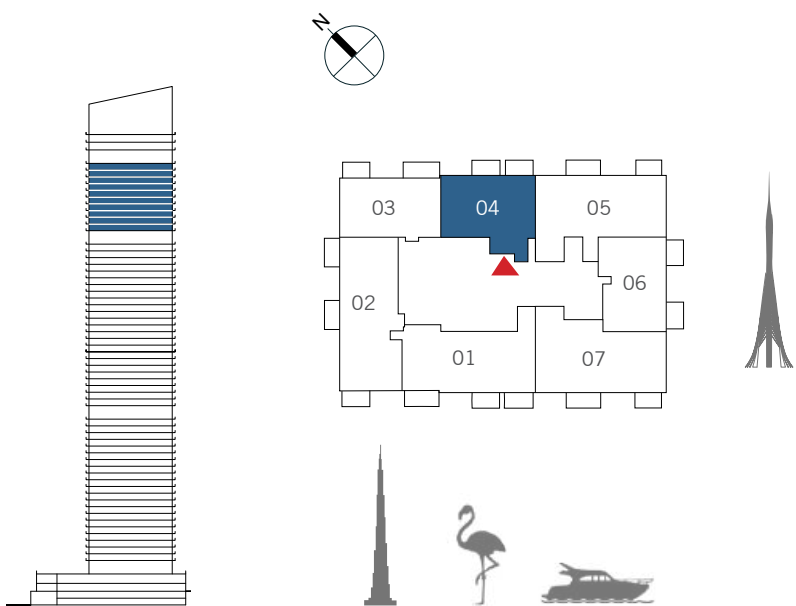


FLOOR PLAN 1. All dimensions are in imperial and metric, and measured from finish to finish excluding construction tolerances. 2. All materials, dimensions, and drawings are approximate only. 3. Information is subject to change without notice, at developer's absolute discretion. 4. Actual area may vary from the stated area. 5. Drawings not to scale. 6. All images used are for illustrative purposes only and do not represent the actual size, features, specifications, fittings, and furnishings. 7. The developer reserves the right to make revisions / alterations, at it's absolute discretion, without any liability whatsoever.

2 BEDROOM

UNIT 04 | LEVEL 50-59

SUITE AREA	1185.21 SQ.FT.	110.11 SQ.M.
BALCONY AREA	142.84 SQ.FT.	13.27 SQ.M.
TOTAL AREA	1328.05 SQ.FT.	123.38 SQ.M.



FLOOR PLAN 1. All dimensions are in imperial and metric, and measured from finish to finish excluding construction tolerances. 2. All materials, dimensions, and drawings are approximate only. 3. Information is subject to change without notice, at developer's absolute discretion. 4. Actual area may vary from the stated area. 5. Drawings not to scale. 6. All images used are for illustrative purposes only and do not represent the actual size, features, specifications, fittings, and furnishings. 7. The developer reserves the right to make revisions / alterations, at it's absolute discretion, without any liability whatsoever.

DUBAI CREEK
HARBOUR

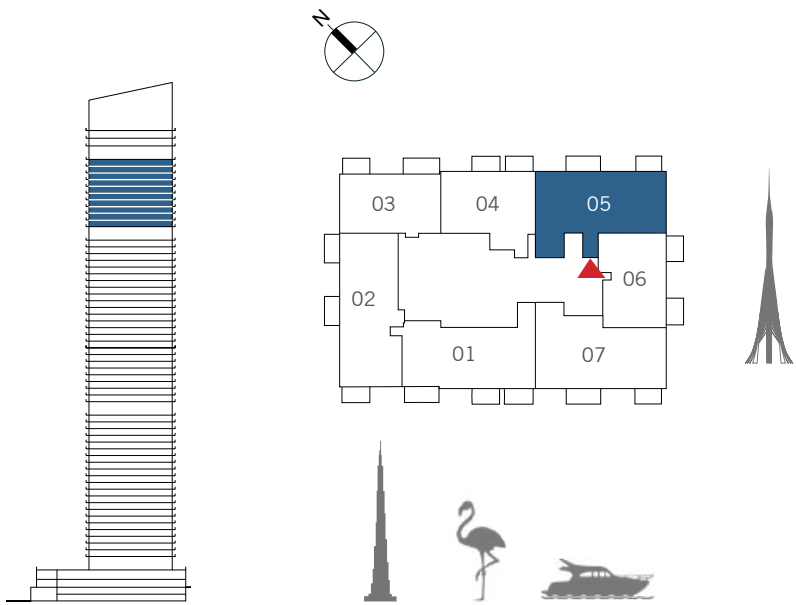
THE
GRAND

FLOOR PLANS

3 BEDROOM

UNIT 05 | LEVEL 50-59

SUITE AREA	1658.50 SQ.FT.	154.08 SQ.M.
BALCONY AREA	152.63 SQ.FT.	14.18 SQ.M.
TOTAL AREA	1811.13 SQ.FT.	168.26 SQ.M.



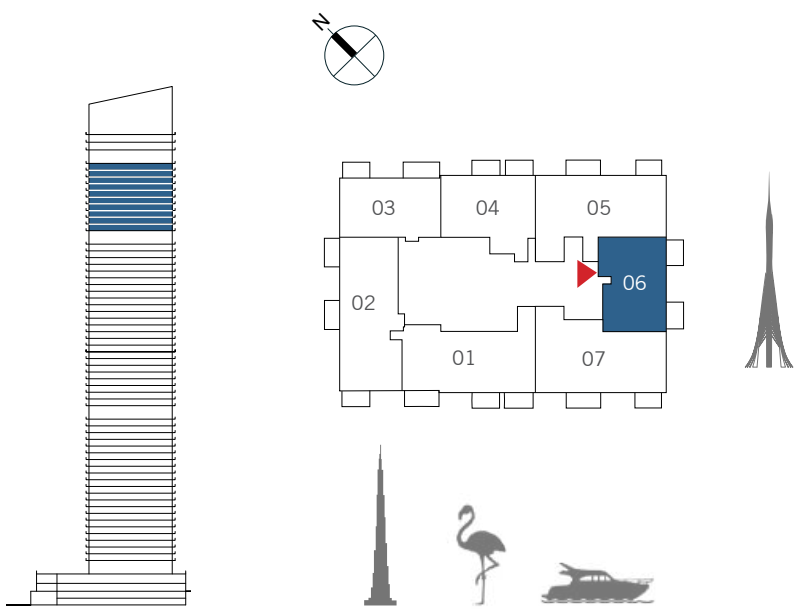
FLOOR PLAN 1. All dimensions are in imperial and metric, and measured from finish to finish excluding construction tolerances. 2. All materials, dimensions, and drawings are approximate only. 3. Information is subject to change without notice, at developer’s absolute discretion. 4. Actual area may vary from the stated area. 5. Drawings not to scale. 6. All images used are for illustrative purposes only and do not represent the actual size, features, specifications, fittings, and furnishings. 7. The developer reserves the right to make revisions / alterations, at it’s absolute discretion, without any liability whatsoever.



2 BEDROOM

UNIT 06 | LEVEL 50-59

SUITE AREA	1148.94 SQ.FT.	106.74 SQ.M.
BALCONY AREA	132.93 SQ.FT.	12.35 SQ.M.
TOTAL AREA	1281.87 SQ.FT.	119.09 SQ.M.



FLOOR PLAN 1. All dimensions are in imperial and metric, and measured from finish to finish excluding construction tolerances. 2. All materials, dimensions, and drawings are approximate only. 3. Information is subject to change without notice, at developer’s absolute discretion. 4. Actual area may vary from the stated area. 5. Drawings not to scale. 6. All images used are for illustrative purposes only and do not represent the actual size, features, specifications, fittings, and furnishings. 7. The developer reserves the right to make revisions / alterations, at it’s absolute discretion, without any liability whatsoever.

DUBAI CREEK
HARBOUR

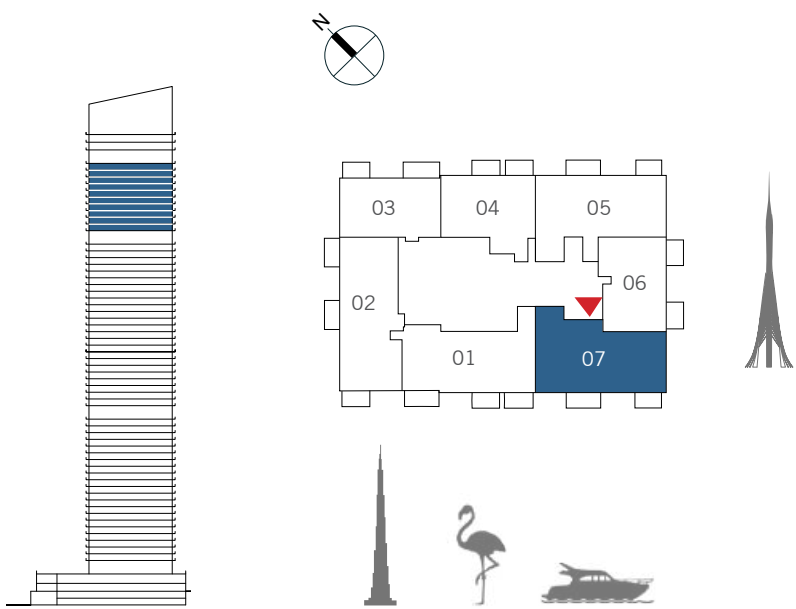
THE
GRAND

FLOOR PLANS

3 BEDROOM

UNIT 07 | LEVEL 50-59

SUITE AREA	1674.76 SQ.FT.	155.59 SQ.M.
BALCONY AREA	152.63 SQ.FT.	14.18 SQ.M.
TOTAL AREA	1827.39 SQ.FT.	169.77 SQ.M.



FLOOR PLAN 1. All dimensions are in imperial and metric, and measured from finish to finish excluding construction tolerances. 2. All materials, dimensions, and drawings are approximate only. 3. Information is subject to change without notice, at developer's absolute discretion. 4. Actual area may vary from the stated area. 5. Drawings not to scale. 6. All images used are for illustrative purposes only and do not represent the actual size, features, specifications, fittings, and furnishings. 7. The developer reserves the right to make revisions / alterations, at it's absolute discretion, without any liability whatsoever.

DUBAI CREEK
HARBOUR

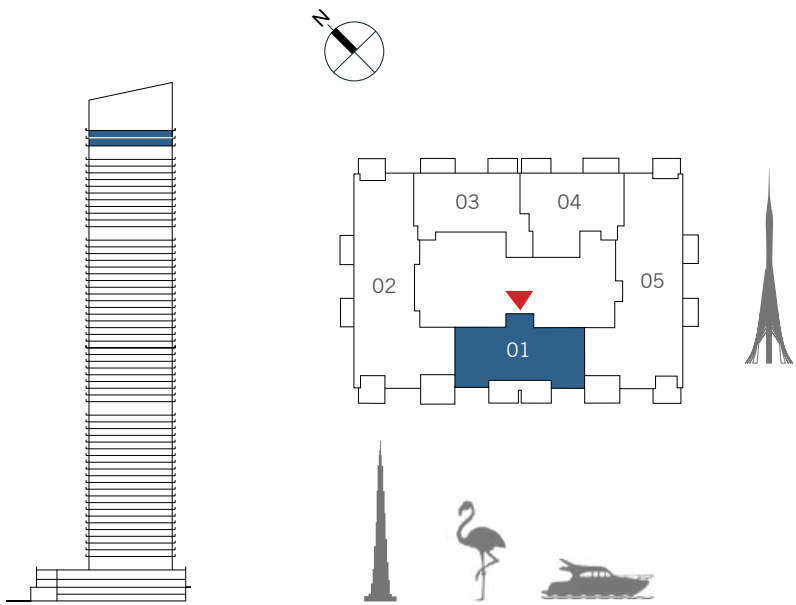
THE
GRAND

PENTHOUSES

2 BEDROOM

UNIT 01 | LEVEL 61-62

SUITE AREA	1422.02 SQ.FT.	132.11 SQ.M.
BALCONY AREA	239.71 SQ.FT.	22.27 SQ.M.
TOTAL AREA	1661.73 SQ.FT.	154.38 SQ.M.



FLOOR PLAN 1. All dimensions are in imperial and metric, and measured from finish to finish excluding construction tolerances. 2. All materials, dimensions, and drawings are approximate only. 3. Information is subject to change without notice, at developer’s absolute discretion. 4. Actual area may vary from the stated area. 5. Drawings not to scale. 6. All images used are for illustrative purposes only and do not represent the actual size, features, specifications, fittings, and furnishings. 7. The developer reserves the right to make revisions / alterations, at it’s absolute discretion, without any liability whatsoever.



DUBAI CREEK
HARBOUR

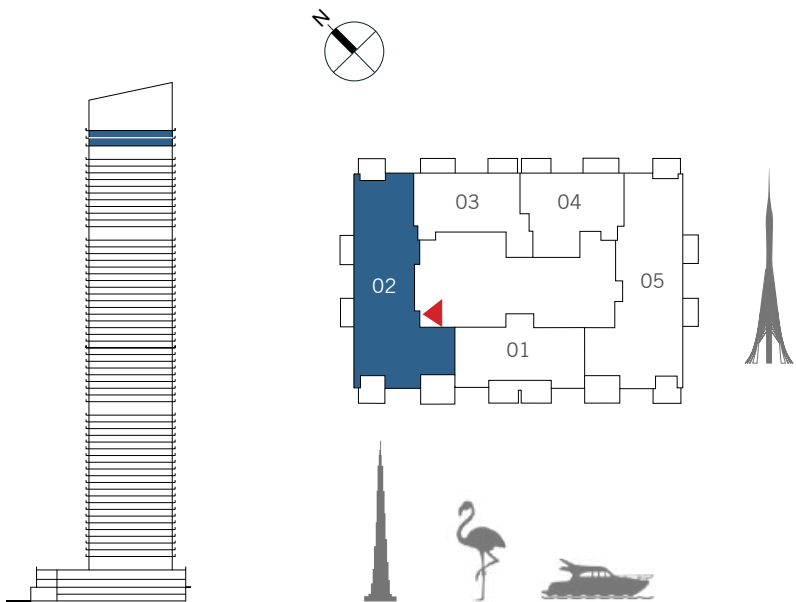
THE
GRAND

PENTHOUSES

4 BEDROOM

UNIT 02 | LEVEL 61-62

SUITE AREA	2627.79 SQ.FT.	244.13 SQ.M.
BALCONY AREA	531.52 SQ.FT.	49.38 SQ.M.
TOTAL AREA	3159.31 SQ.FT.	293.51 SQ.M.



FLOOR PLAN 1. All dimensions are in imperial and metric, and measured from finish to finish excluding construction tolerances. 2. All materials, dimensions, and drawings are approximate only. 3. Information is subject to change without notice, at developer's absolute discretion. 4. Actual area may vary from the stated area. 5. Drawings not to scale. 6. All images used are for illustrative purposes only and do not represent the actual size, features, specifications, fittings, and furnishings. 7. The developer reserves the right to make revisions / alterations, at it's absolute discretion, without any liability whatsoever.



DUBAI CREEK
HARBOUR

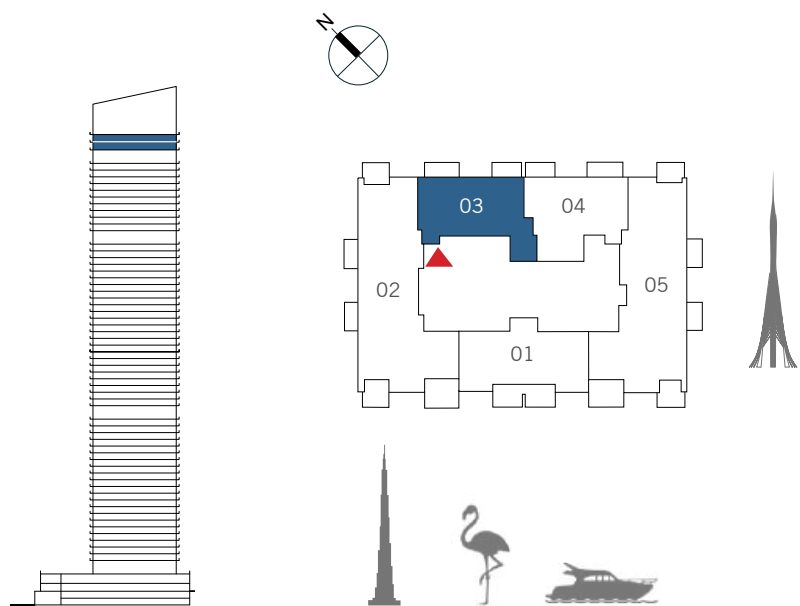
THE
GRAND

PENTHOUSES

2 BEDROOM

UNIT 03 | LEVEL 61-62

SUITE AREA	1295.65 SQ.FT.	120.37 SQ.M.
BALCONY AREA	169.64 SQ.FT.	15.76 SQ.M.
TOTAL AREA	1465.29 SQ.FT.	136.13 SQ.M.



FLOOR PLAN 1. All dimensions are in imperial and metric, and measured from finish to finish excluding construction tolerances. 2. All materials, dimensions, and drawings are approximate only. 3. Information is subject to change without notice, at developer’s absolute discretion. 4. Actual area may vary from the stated area. 5. Drawings not to scale. 6. All images used are for illustrative purposes only and do not represent the actual size, features, specifications, fittings, and furnishings. 7. The developer reserves the right to make revisions / alterations, at it’s absolute discretion, without any liability whatsoever.



DUBAI CREEK
HARBOUR

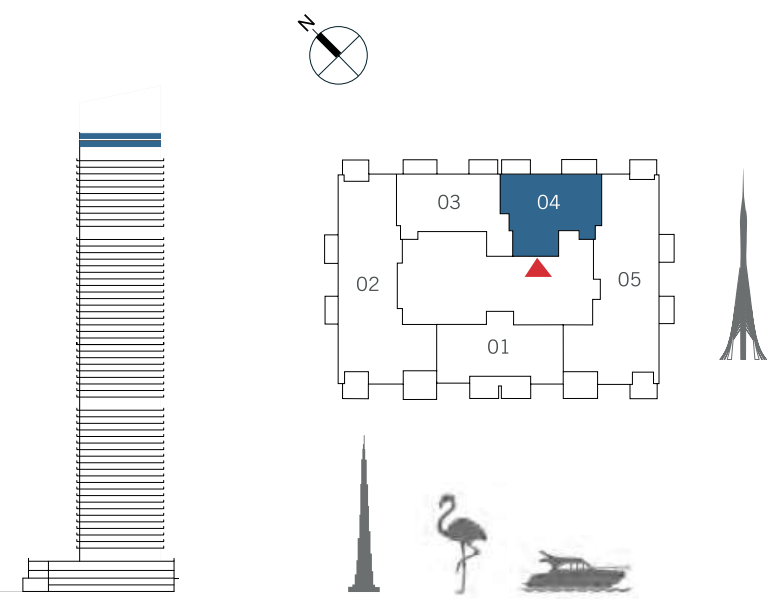
THE
GRAND

PENTHOUSES

2 BEDROOM

UNIT 04 | LEVEL 61-62

SUITE AREA	1309.54 SQ.FT.	121.66 SQ.M.
BALCONY AREA	169.75 SQ.FT.	15.77 SQ.M.
TOTAL AREA	1479.29 SQ.FT.	137.43 SQ.M.



FLOOR PLAN 1. All dimensions are in imperial and metric, and measured from finish to finish excluding construction tolerances. 2. All materials, dimensions, and drawings are approximate only. 3. Information is subject to change without notice, at developer's absolute discretion. 4. Actual area may vary from the stated area. 5. Drawings not to scale. 6. All images used are for illustrative purposes only and do not represent the actual size, features, specifications, fittings, and furnishings. 7. The developer reserves the right to make revisions / alterations, at it's absolute discretion, without any liability whatsoever.



DUBAI CREEK
HARBOUR

THE
GRAND

PENTHOUSES

4 BEDROOM

UNIT 05 | LEVEL 61-62

SUITE AREA	2667.73 SQ.FT.	247.84 SQ.M.
BALCONY AREA	525.28 SQ.FT.	48.80 SQ.M.
TOTAL AREA	3193.01 SQ.FT.	296.64 SQ.M.



FLOOR PLAN 1. All dimensions are in imperial and metric, and measured from finish to finish excluding construction tolerances. 2. All materials, dimensions, and drawings are approximate only. 3. Information is subject to change without notice, at developer’s absolute discretion. 4. Actual area may vary from the stated area. 5. Drawings not to scale. 6. All images used are for illustrative purposes only and do not represent the actual size, features, specifications, fittings, and furnishings. 7. The developer reserves the right to make revisions / alterations, at it’s absolute discretion, without any liability whatsoever.



DUBAI CREEK
HARBOUR

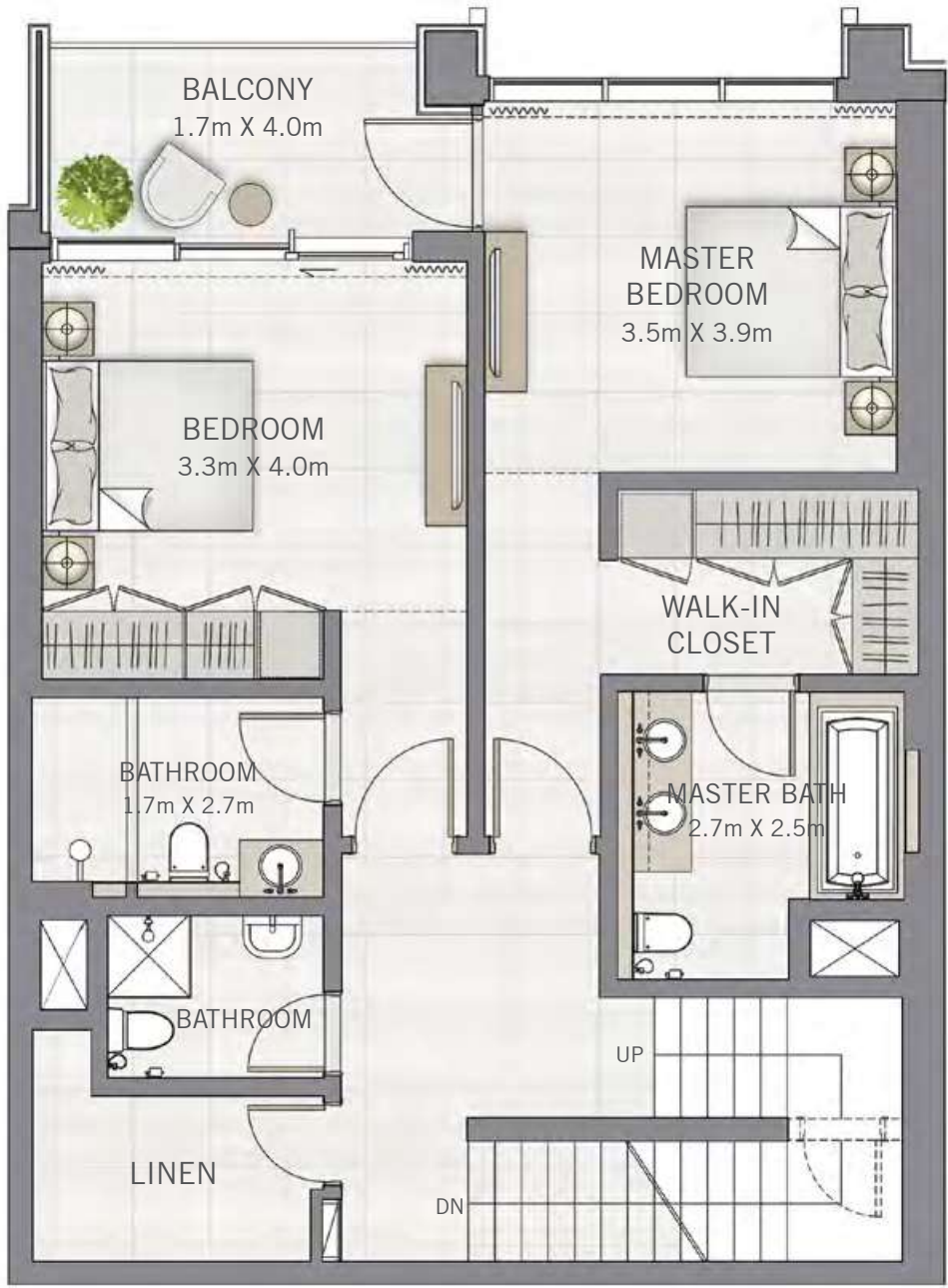
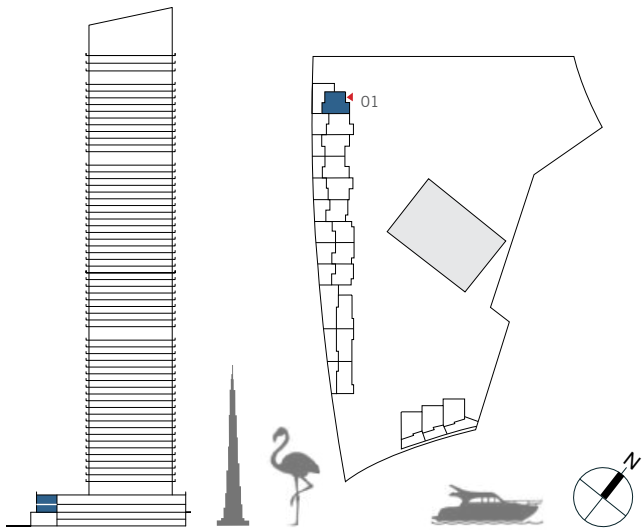
THE
GRAND

TOWNHOUSES

3 BEDROOM

UNIT 01 | GROUND FLOOR & LEVEL 01-02

SUITE AREA	1831.05 SQ.FT.	170.11 SQ.M.
BALCONY AREA	374.26 SQ.FT.	34.77 SQ.M.
ROOF GARDEN AREA	940.66 SQ.FT.	87.39 SQ.M.
TOTAL AREA	3145.97 SQ.FT.	292.27 SQ.M.



FLOOR PLAN 1. All dimensions are in imperial and metric, and measured from finish to finish excluding construction tolerances. 2. All materials, dimensions, and drawings are approximate only. 3. Information is subject to change without notice, at developer's absolute discretion. 4. Actual area may vary from the stated area. 5. Drawings not to scale. 6. All images used are for illustrative purposes only and do not represent the actual size, features, specifications, fittings, and furnishings. 7. The developer reserves the right to make revisions / alterations, at it's absolute discretion, without any liability whatsoever.



DUBAI CREEK
HARBOUR

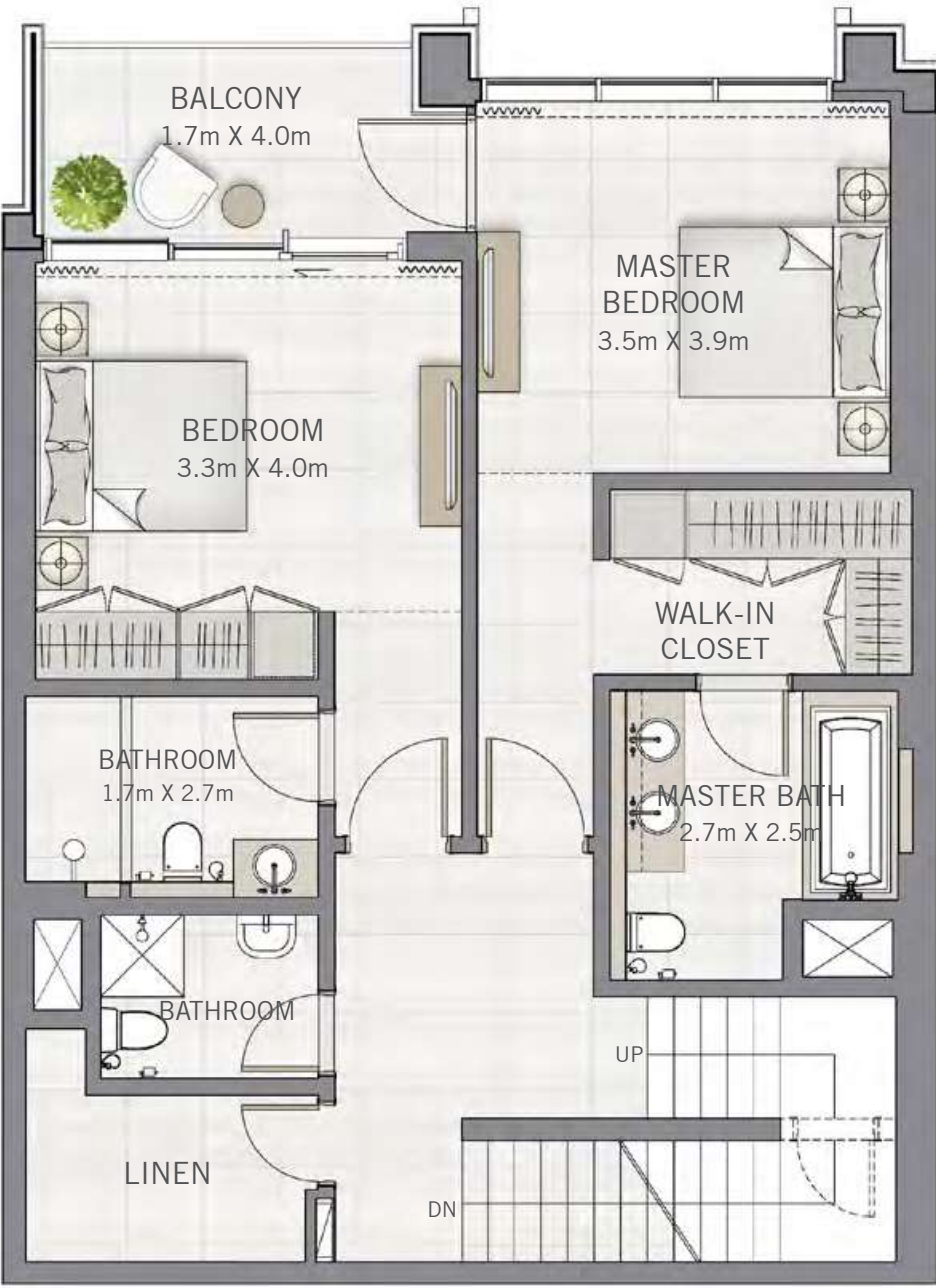
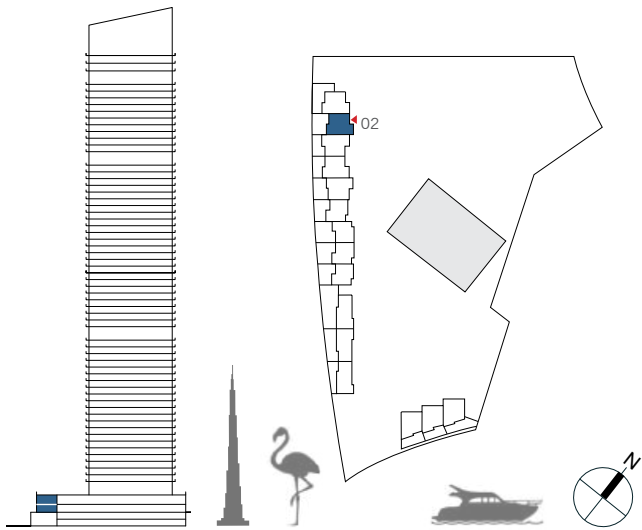
THE
GRAND

TOWNHOUSES

3 BEDROOM

UNIT 02 | GROUND FLOOR & LEVEL 01-02

SUITE AREA	1822.01 SQ.FT.	169.27 SQ.M.
BALCONY AREA	517.85 SQ.FT.	48.11 SQ.M.
ROOF GARDEN AREA	969.72 SQ.FT.	90.09 SQ.M.
TOTAL AREA	3309.58 SQ.FT.	307.47 SQ.M.



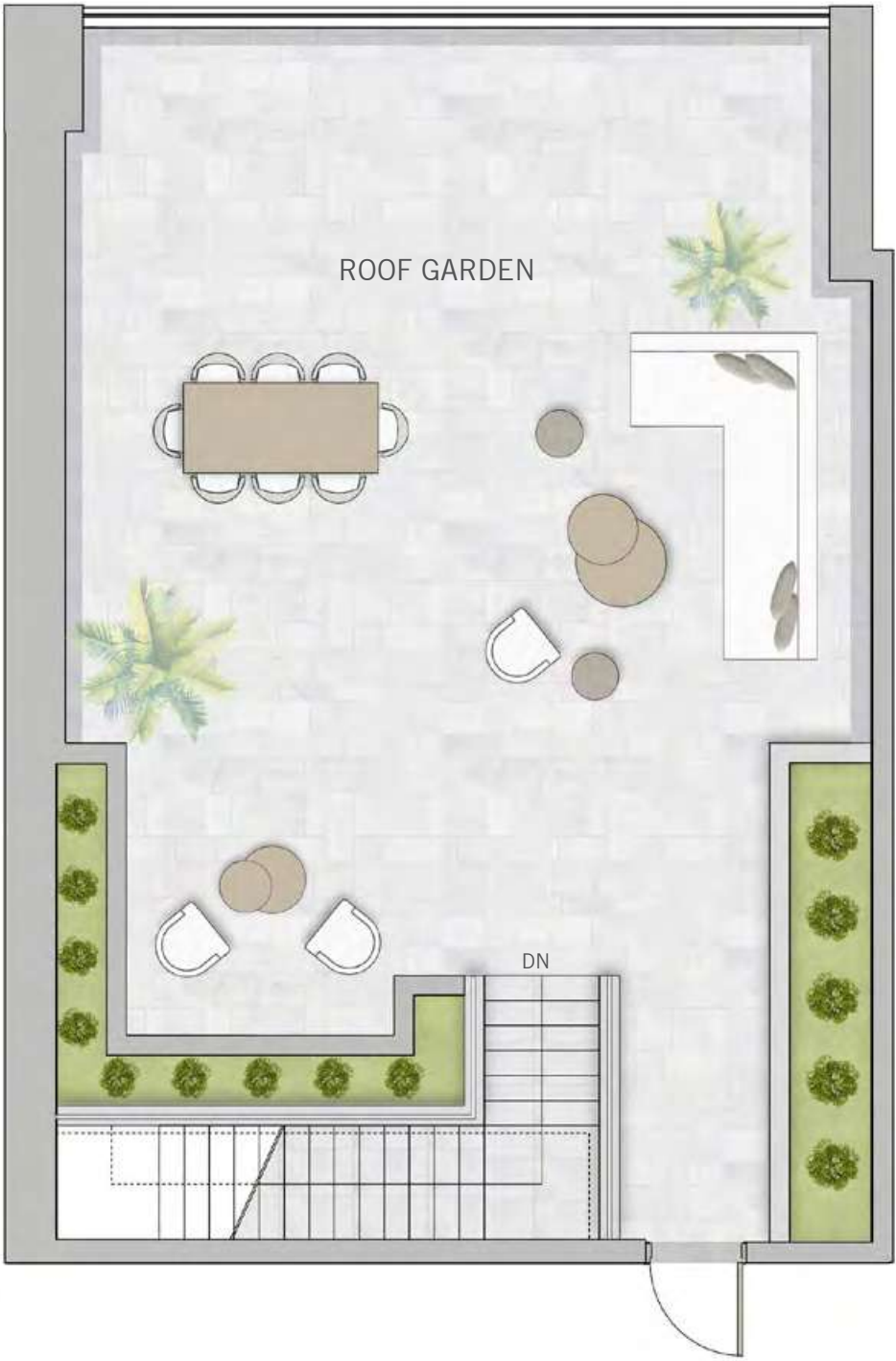
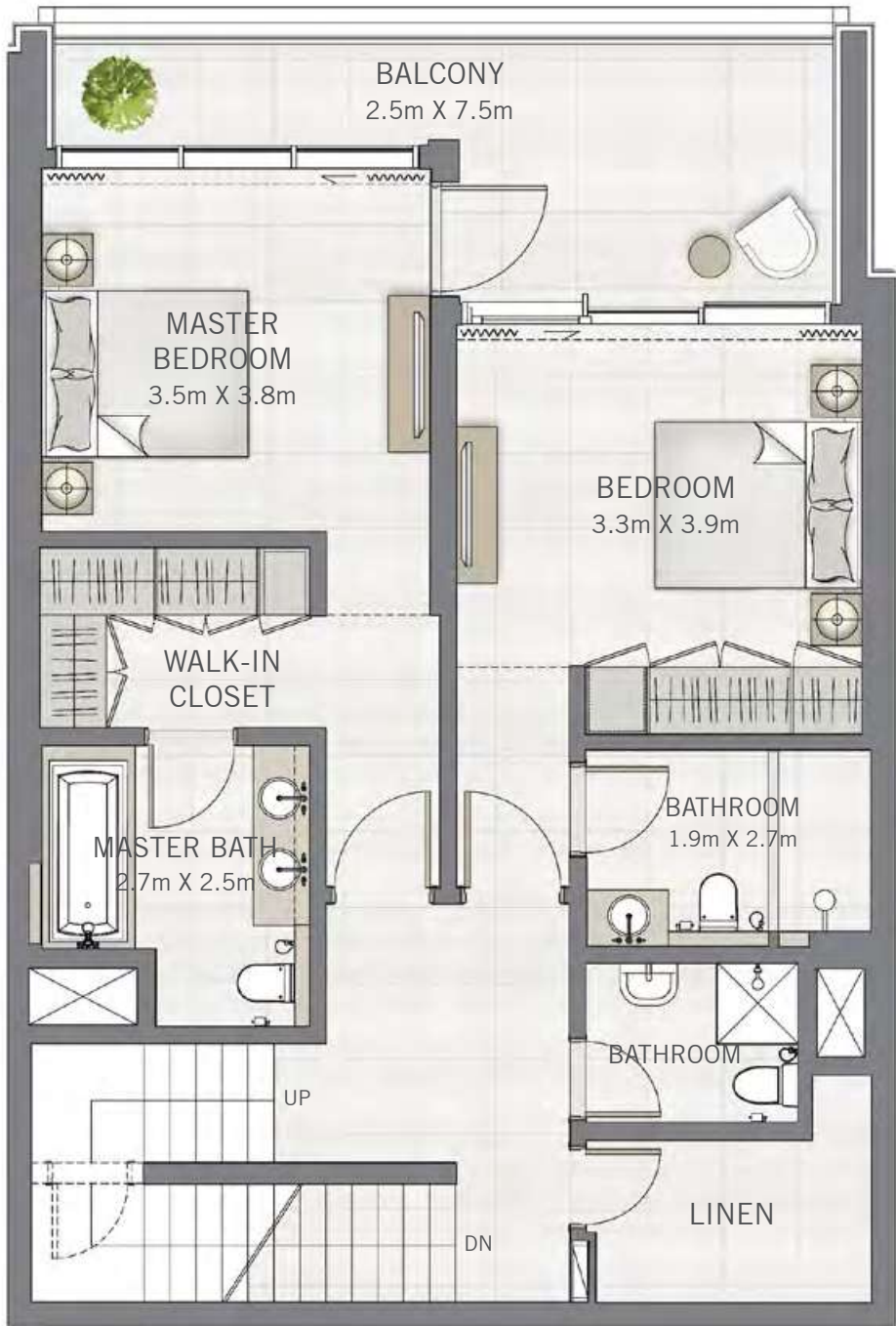
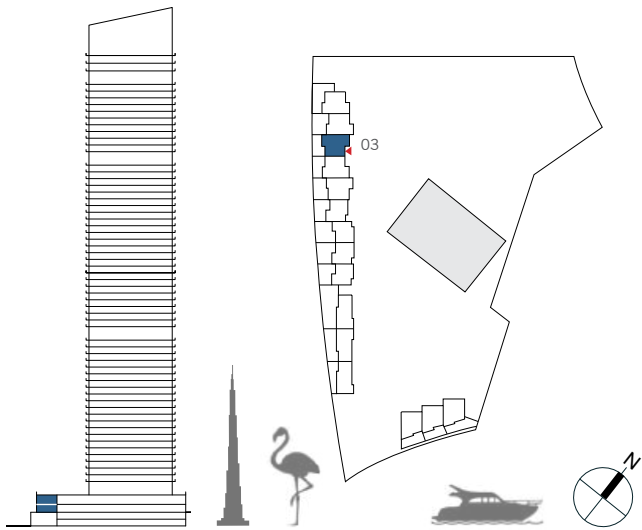
FLOOR PLAN 1. All dimensions are in imperial and metric, and measured from finish to finish excluding construction tolerances. 2. All materials, dimensions, and drawings are approximate only. 3. Information is subject to change without notice, at developer's absolute discretion. 4. Actual area may vary from the stated area. 5. Drawings not to scale. 6. All images used are for illustrative purposes only and do not represent the actual size, features, specifications, fittings, and furnishings. 7. The developer reserves the right to make revisions / alterations, at it's absolute discretion, without any liability whatsoever.



3 BEDROOM

UNIT 03 | GROUND FLOOR & LEVEL 01-02

SUITE AREA	1777.55 SQ.FT.	165.14 SQ.M.
BALCONY AREA	494.28 SQ.FT.	45.92 SQ.M.
ROOF GARDEN AREA	1023.32 SQ.FT.	95.07 SQ.M.
TOTAL AREA	3295.15 SQ.FT.	306.13 SQ.M.

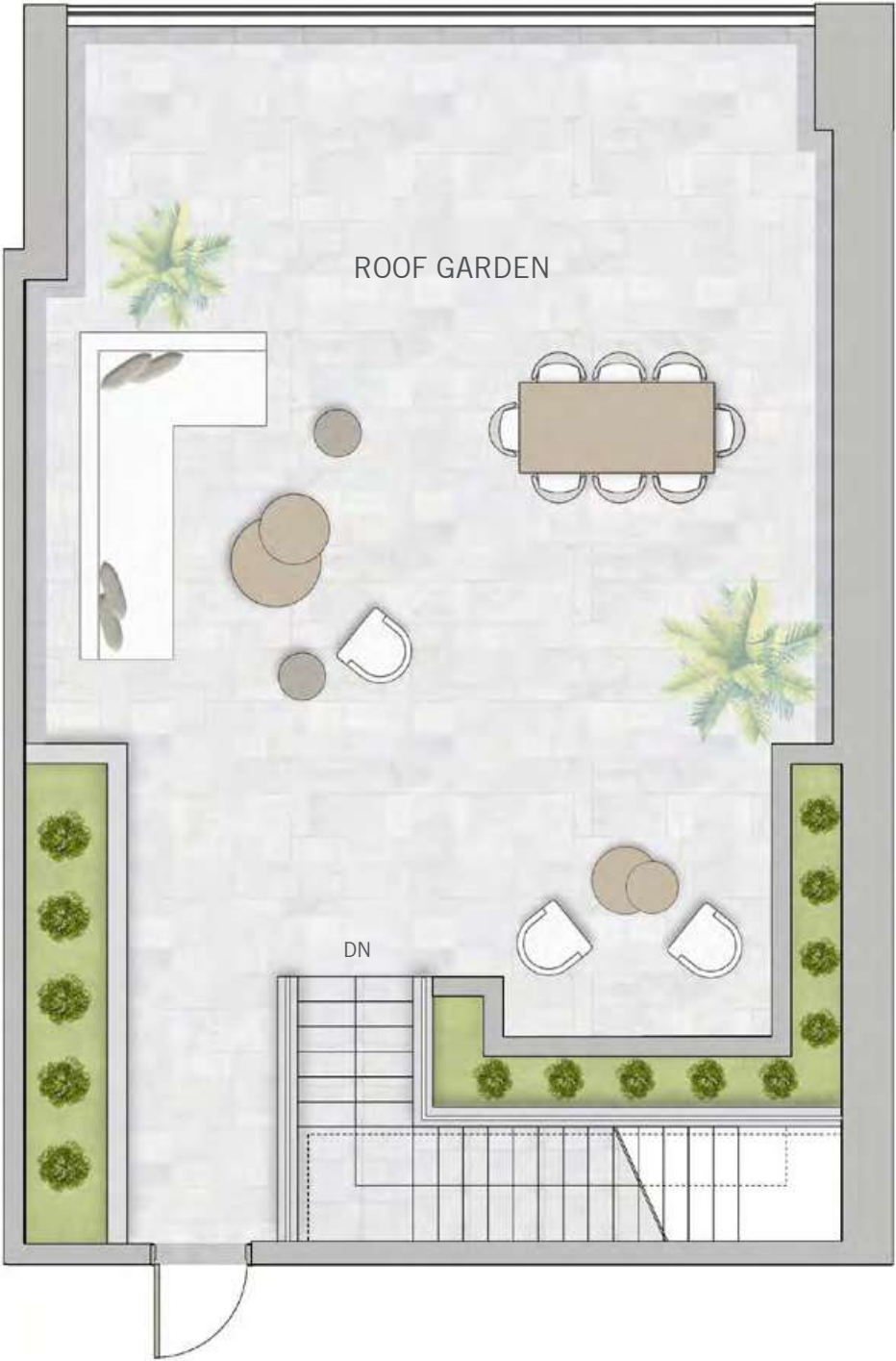
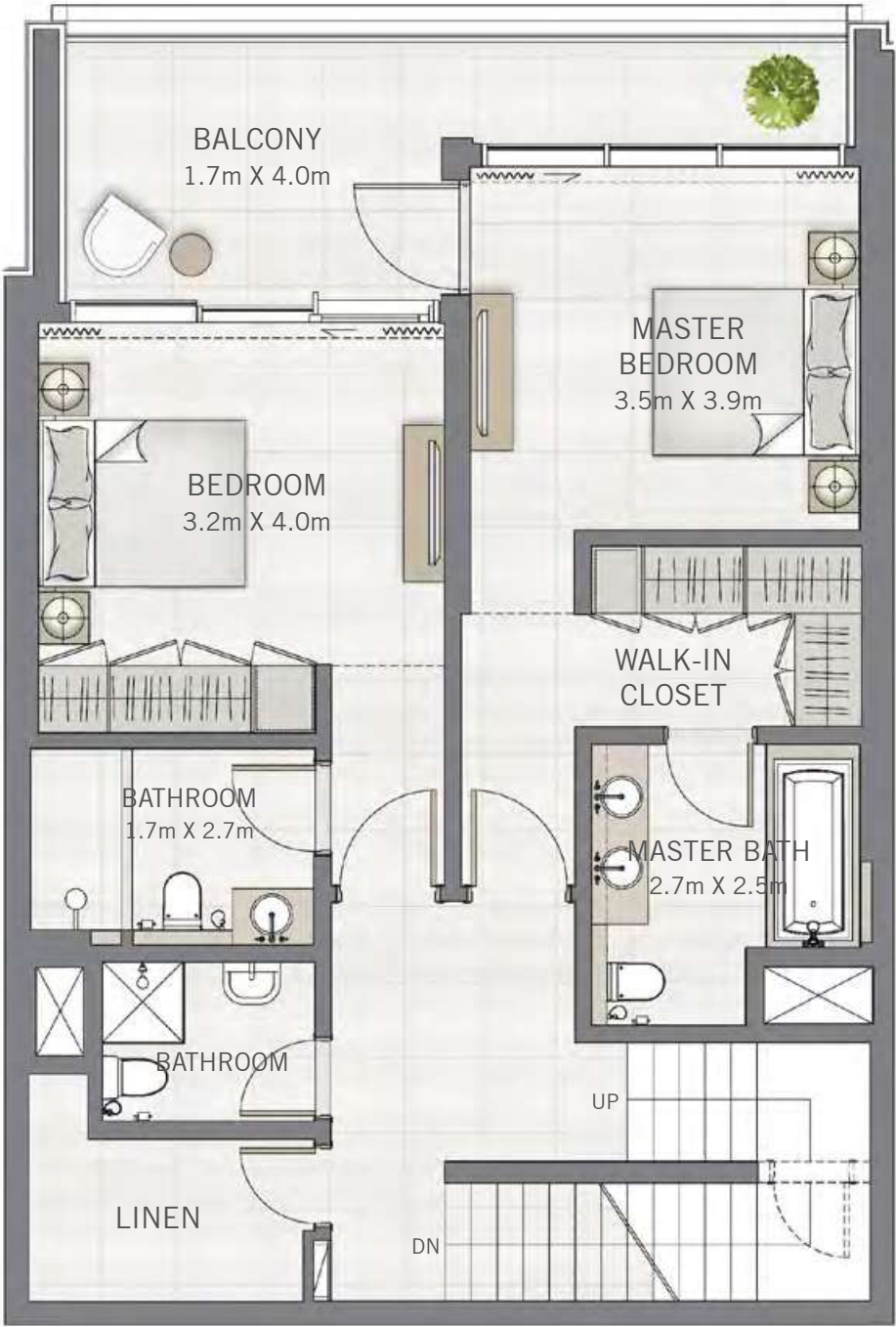
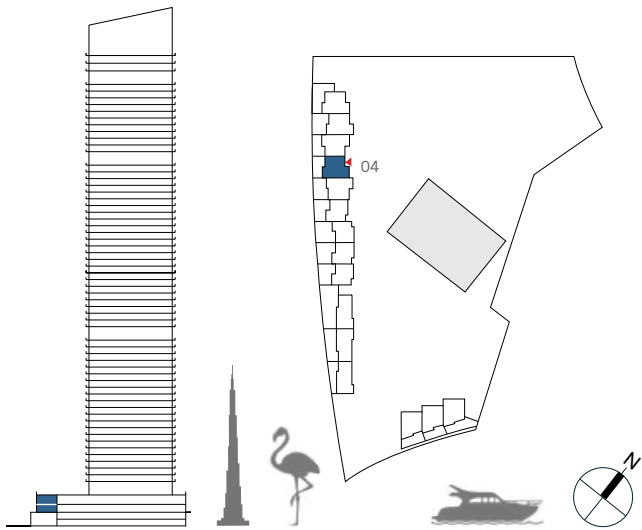


FLOOR PLAN 1. All dimensions are in imperial and metric, and measured from finish to finish excluding construction tolerances. 2. All materials, dimensions, and drawings are approximate only. 3. Information is subject to change without notice, at developer's absolute discretion. 4. Actual area may vary from the stated area. 5. Drawings not to scale. 6. All images used are for illustrative purposes only and do not represent the actual size, features, specifications, fittings, and furnishings. 7. The developer reserves the right to make revisions / alterations, at it's absolute discretion, without any liability whatsoever.

3 BEDROOM

UNIT 04 | GROUND FLOOR & LEVEL 01-02

SUITE AREA	1777.55 SQ.FT.	165.14 SQ.M.
BALCONY AREA	456.28 SQ.FT.	42.39 SQ.M.
ROOF GARDEN AREA	1018.59 SQ.FT.	94.63 SQ.M.
TOTAL AREA	3252.42 SQ.FT.	302.16 SQ.M.



FLOOR PLAN 1. All dimensions are in imperial and metric, and measured from finish to finish excluding construction tolerances. 2. All materials, dimensions, and drawings are approximate only. 3. Information is subject to change without notice, at developer's absolute discretion. 4. Actual area may vary from the stated area. 5. Drawings not to scale. 6. All images used are for illustrative purposes only and do not represent the actual size, features, specifications, fittings, and furnishings. 7. The developer reserves the right to make revisions / alterations, at it's absolute discretion, without any liability whatsoever.

DUBAI CREEK
HARBOUR

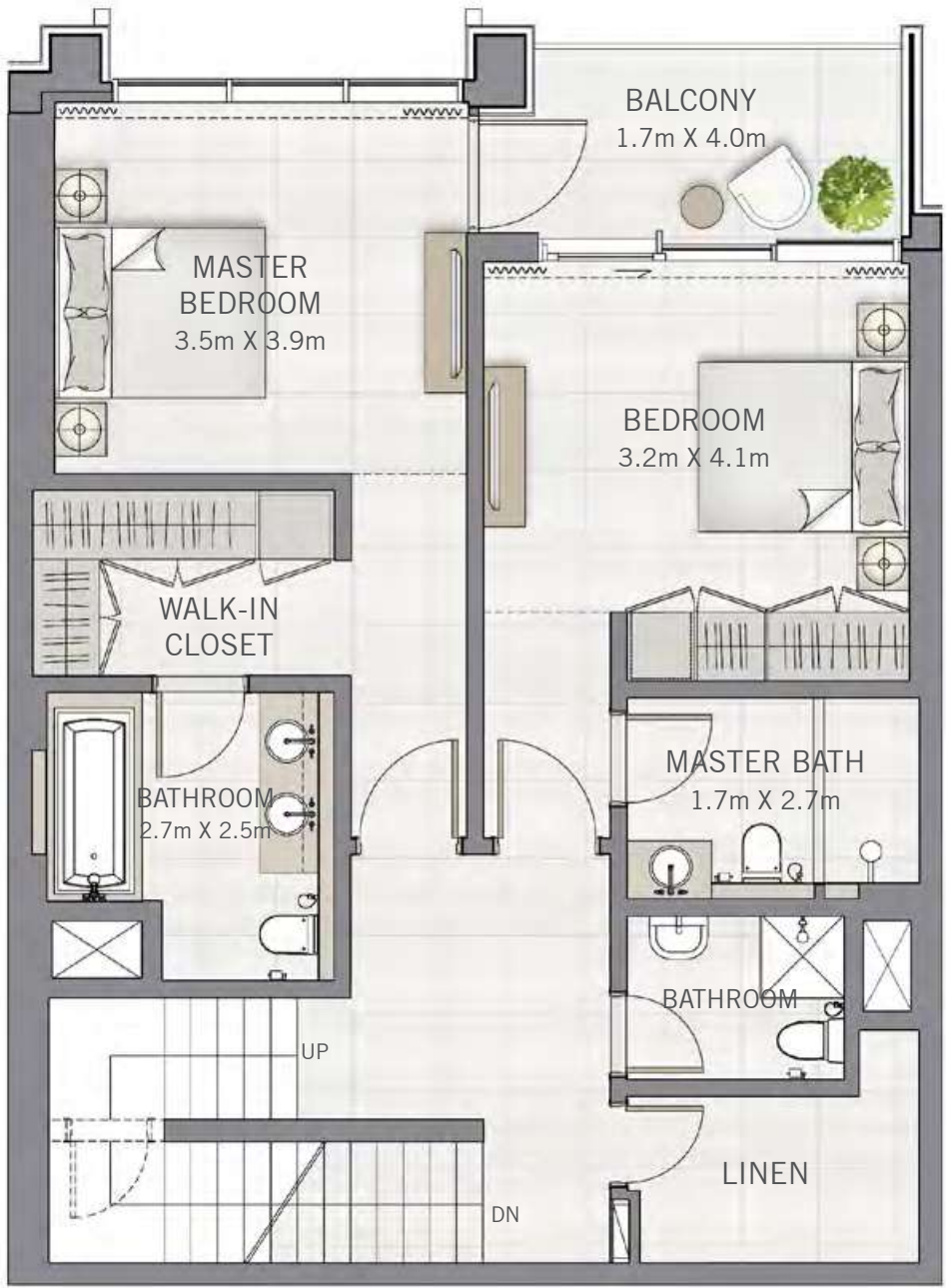
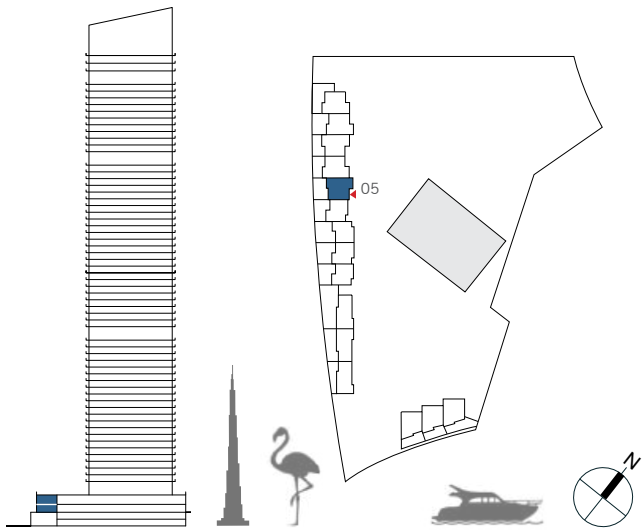
THE
GRAND

TOWNHOUSES

3 BEDROOM

UNIT 05 | GROUND FLOOR & LEVEL 01-02

SUITE AREA	1820.50 SQ.FT.	169.13 SQ.M.
BALCONY AREA	431.95 SQ.FT.	40.13 SQ.M.
ROOF GARDEN AREA	940.66 SQ.FT.	87.39 SQ.M.
TOTAL AREA	3193.11 SQ.FT.	296.65 SQ.M.



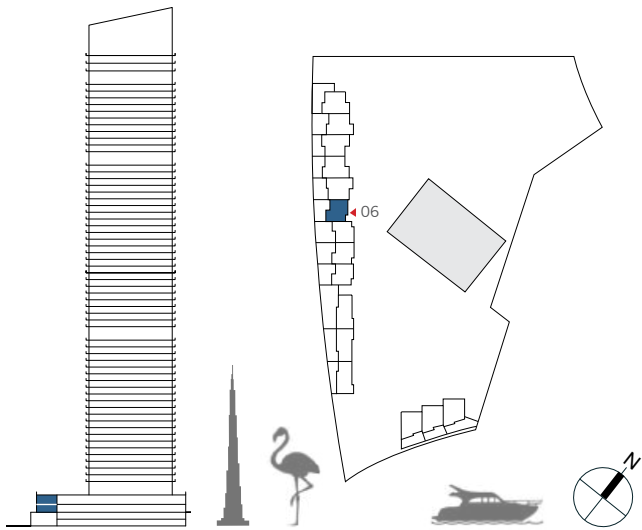
FLOOR PLAN 1. All dimensions are in imperial and metric, and measured from finish to finish excluding construction tolerances. 2. All materials, dimensions, and drawings are approximate only. 3. Information is subject to change without notice, at developer's absolute discretion. 4. Actual area may vary from the stated area. 5. Drawings not to scale. 6. All images used are for illustrative purposes only and do not represent the actual size, features, specifications, fittings, and furnishings. 7. The developer reserves the right to make revisions / alterations, at it's absolute discretion, without any liability whatsoever.



2 BEDROOM

UNIT 06 | GROUND FLOOR & LEVEL 01-02

SUITE AREA	1472.40 SQ.FT.	136.79 SQ.M.
BALCONY AREA	582.11 SQ.FT.	54.08 SQ.M.
ROOF GARDEN AREA	892.33 SQ.FT.	82.90 SQ.M.
TOTAL AREA	2946.84 SQ.FT.	273.77 SQ.M.

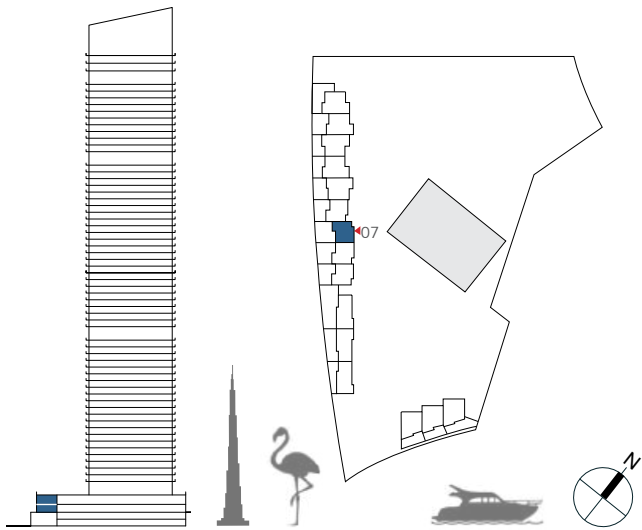


FLOOR PLAN 1. All dimensions are in imperial and metric, and measured from finish to finish excluding construction tolerances. 2. All materials, dimensions, and drawings are approximate only. 3. Information is subject to change without notice, at developer's absolute discretion. 4. Actual area may vary from the stated area. 5. Drawings not to scale. 6. All images used are for illustrative purposes only and do not represent the actual size, features, specifications, fittings, and furnishings. 7. The developer reserves the right to make revisions / alterations, at it's absolute discretion, without any liability whatsoever.

2 BEDROOM

UNIT 07 | GROUND FLOOR & LEVEL 01-02

SUITE AREA	1445.27 SQ.FT.	134.27 SQ.M.
BALCONY AREA	656.49 SQ.FT.	60.99 SQ.M.
ROOF GARDEN AREA	810.20 SQ.FT.	75.27 SQ.M.
TOTAL AREA	2911.96 SQ.FT.	270.53 SQ.M.

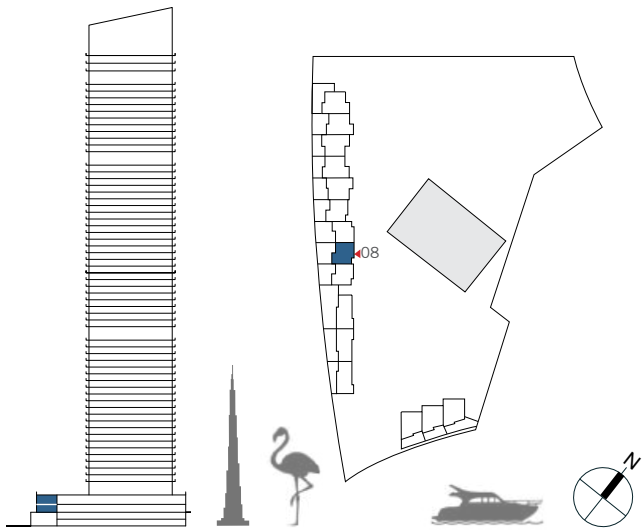


FLOOR PLAN 1. All dimensions are in imperial and metric, and measured from finish to finish excluding construction tolerances. 2. All materials, dimensions, and drawings are approximate only. 3. Information is subject to change without notice, at developer’s absolute discretion. 4. Actual area may vary from the stated area. 5. Drawings not to scale. 6. All images used are for illustrative purposes only and do not represent the actual size, features, specifications, fittings, and furnishings. 7. The developer reserves the right to make revisions / alterations, at it’s absolute discretion, without any liability whatsoever.

2 BEDROOM

UNIT 08 | GROUND FLOOR & LEVEL 01-02

SUITE AREA	1444.95 SQ.FT.	134.24 SQ.M.
BALCONY AREA	605.04 SQ.FT.	56.21 SQ.M.
ROOF GARDEN AREA	810.20 SQ.FT.	75.27 SQ.M.
TOTAL AREA	2860.19 SQ.FT.	265.72 SQ.M.



FLOOR PLAN 1. All dimensions are in imperial and metric, and measured from finish to finish excluding construction tolerances. 2. All materials, dimensions, and drawings are approximate only. 3. Information is subject to change without notice, at developer's absolute discretion. 4. Actual area may vary from the stated area. 5. Drawings not to scale. 6. All images used are for illustrative purposes only and do not represent the actual size, features, specifications, fittings, and furnishings. 7. The developer reserves the right to make revisions / alterations, at it's absolute discretion, without any liability whatsoever.

DUBAI CREEK
HARBOUR

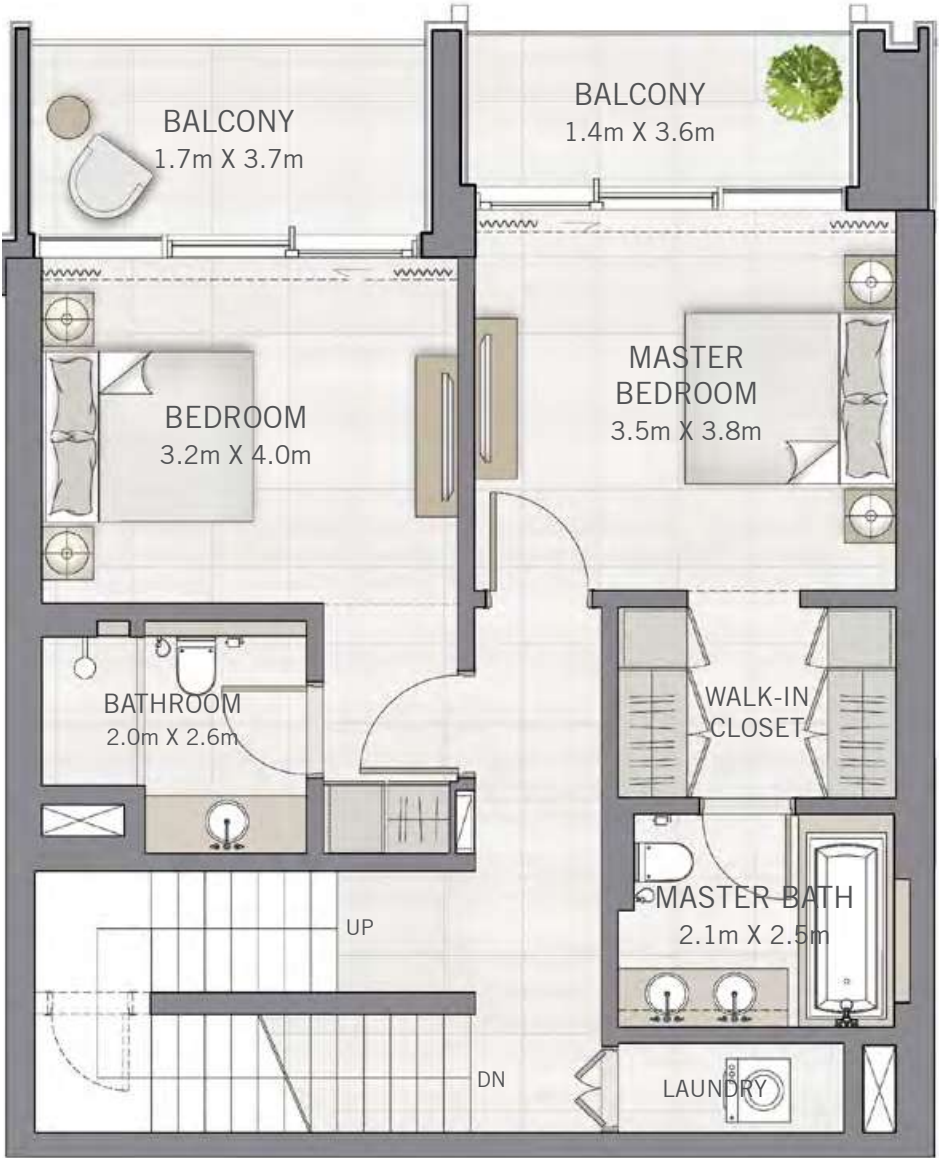
THE
GRAND

TOWNHOUSES

2 BEDROOM

UNIT 09 | GROUND FLOOR & LEVEL 01-02

SUITE AREA	1468.63 SQ.FT.	136.44 SQ.M.
BALCONY AREA	584.69 SQ.FT.	54.32 SQ.M.
ROOF GARDEN AREA	856.27 SQ.FT.	79.55 SQ.M.
TOTAL AREA	2909.59 SQ.FT.	270.31 SQ.M.



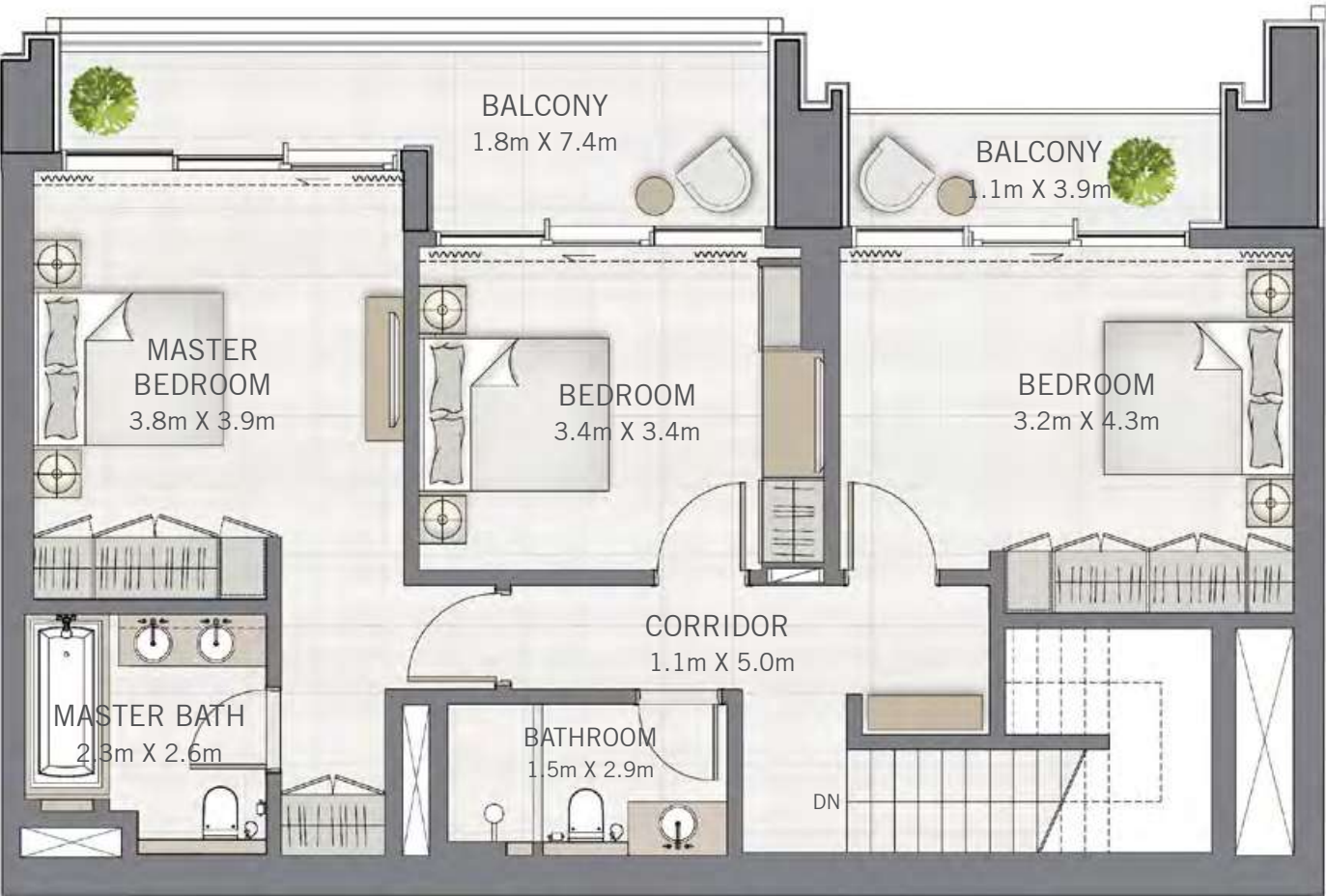
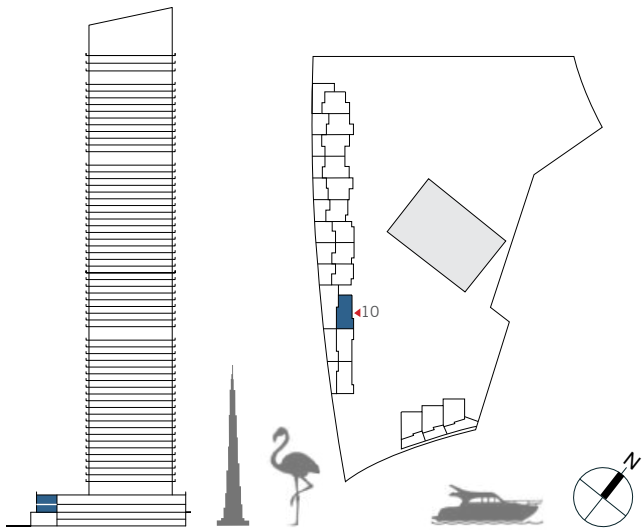
FLOOR PLAN 1. All dimensions are in imperial and metric, and measured from finish to finish excluding construction tolerances. 2. All materials, dimensions, and drawings are approximate only. 3. Information is subject to change without notice, at developer's absolute discretion. 4. Actual area may vary from the stated area. 5. Drawings not to scale. 6. All images used are for illustrative purposes only and do not represent the actual size, features, specifications, fittings, and furnishings. 7. The developer reserves the right to make revisions / alterations, at it's absolute discretion, without any liability whatsoever.



3 BEDROOM

UNIT 10 | GROUND FLOOR & LEVEL 01

SUITE AREA	1778.20 SQ.FT.	165.20 SQ.M.
BALCONY AREA	1062.83 SQ.FT.	98.74 SQ.M.
TOTAL AREA	2841.03 SQ.FT.	263.94 SQ.M.

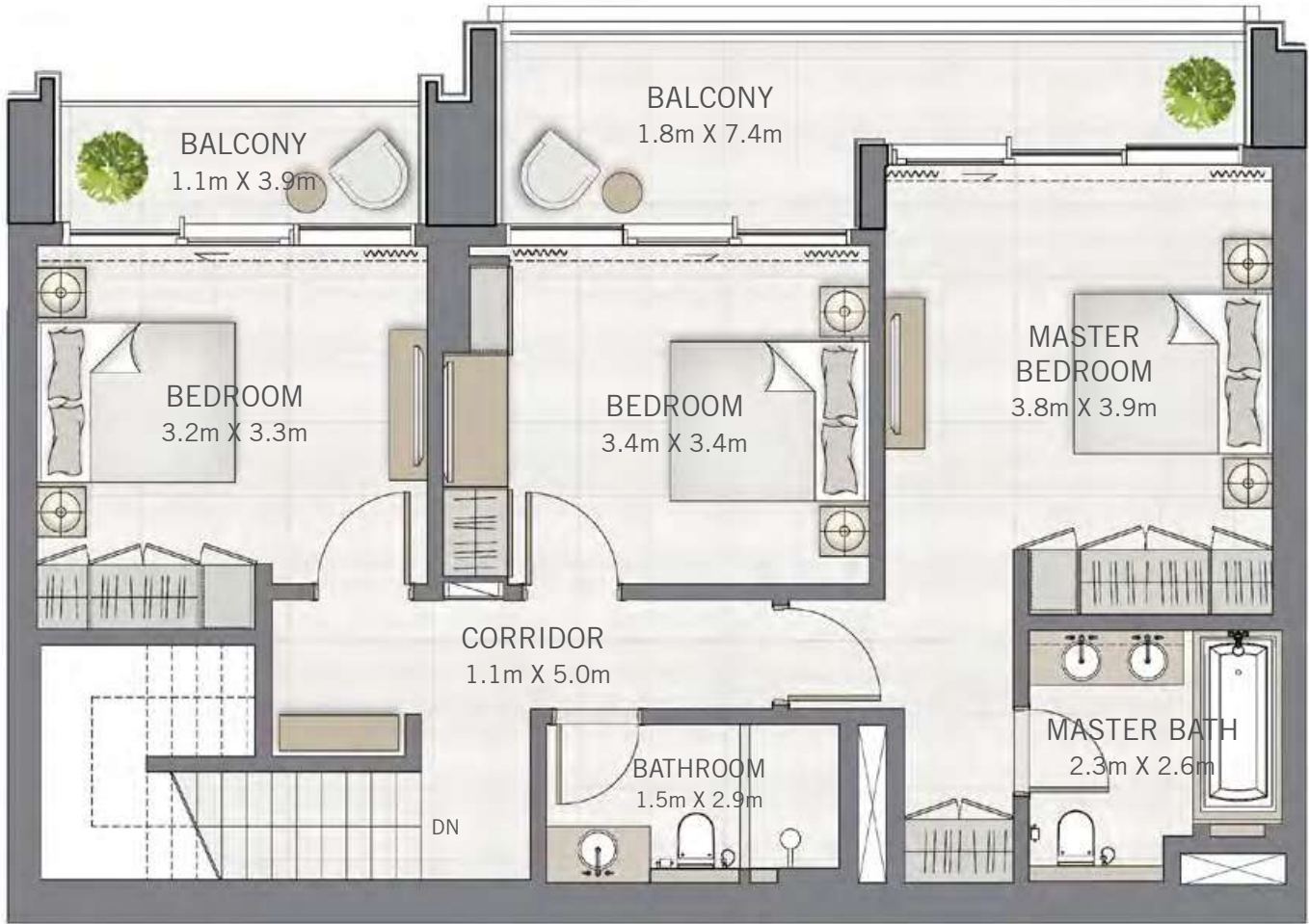
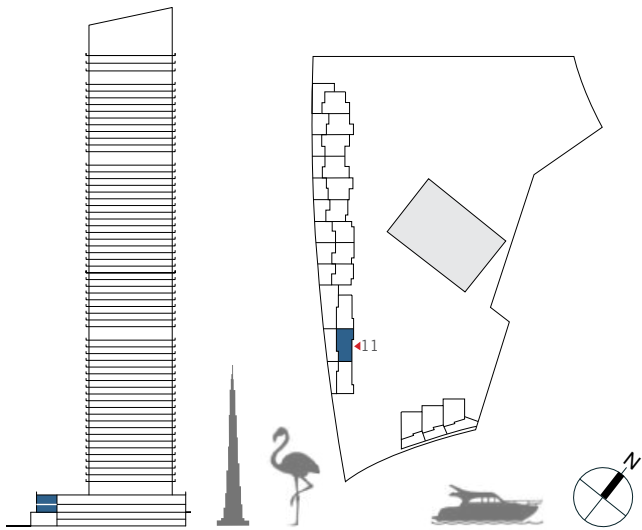


FLOOR PLAN 1. All dimensions are in imperial and metric, and measured from finish to finish excluding construction tolerances. 2. All materials, dimensions, and drawings are approximate only. 3. Information is subject to change without notice, at developer’s absolute discretion. 4. Actual area may vary from the stated area. 5. Drawings not to scale. 6. All images used are for illustrative purposes only and do not represent the actual size, features, specifications, fittings, and furnishings. 7. The developer reserves the right to make revisions / alterations, at it’s absolute discretion, without any liability whatsoever.

3 BEDROOM

UNIT 11 | GROUND FLOOR & LEVEL 01

SUITE AREA	1712.22 SQ.FT.	159.07 SQ.M.
BALCONY AREA	687.06 SQ.FT.	63.83 SQ.M.
TOTAL AREA	2399.28 SQ.FT.	222.90 SQ.M.

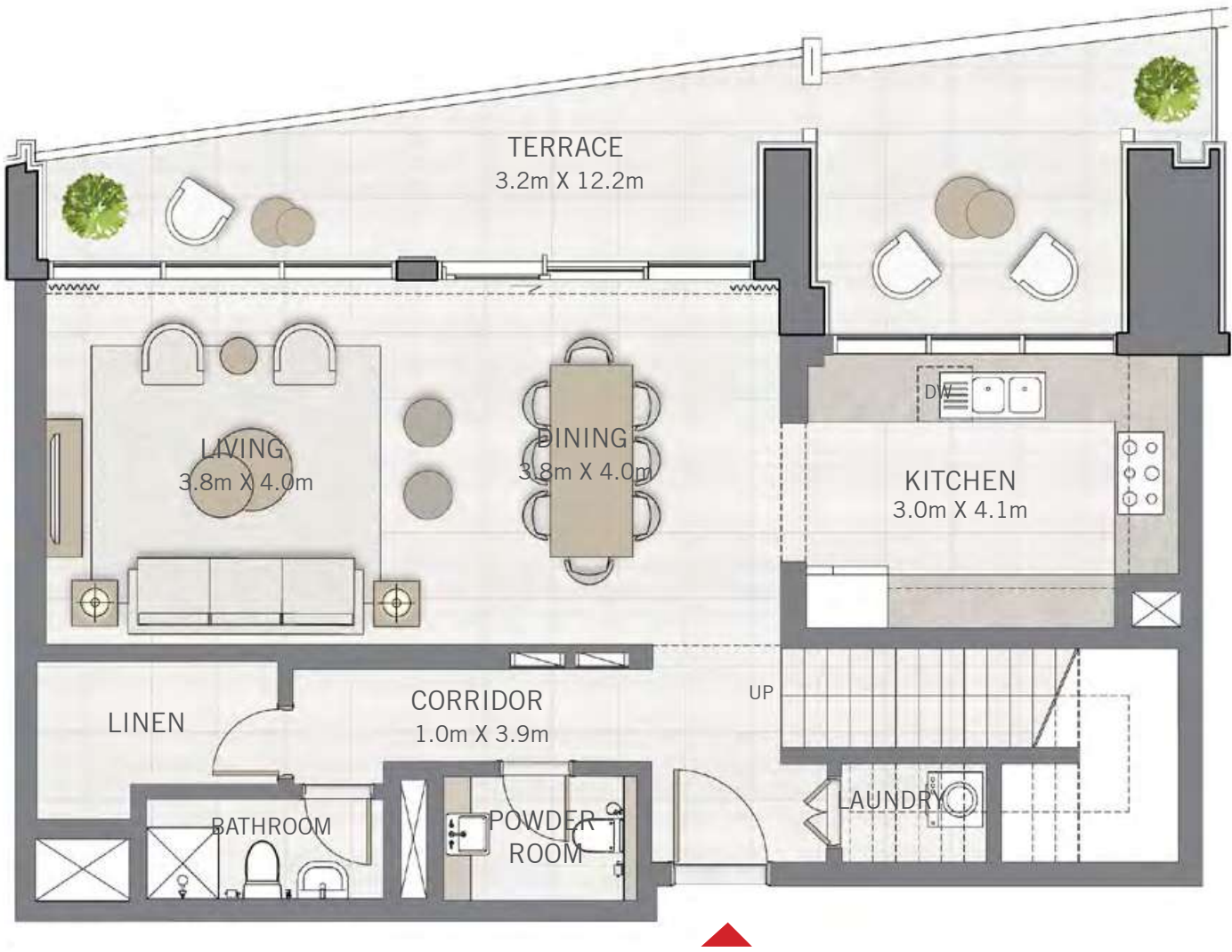
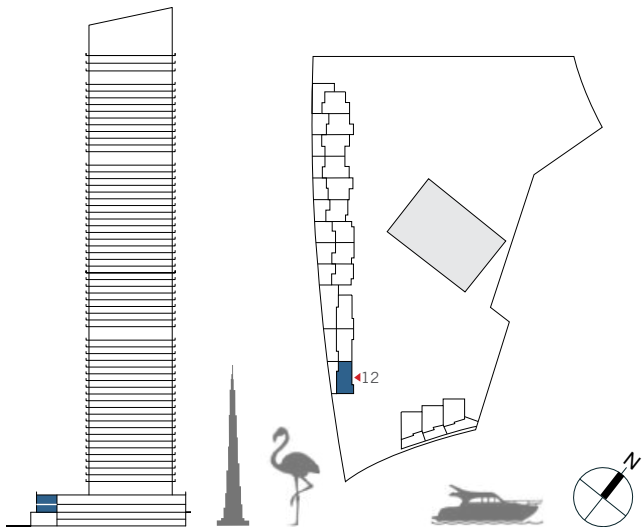


FLOOR PLAN 1. All dimensions are in imperial and metric, and measured from finish to finish excluding construction tolerances. 2. All materials, dimensions, and drawings are approximate only. 3. Information is subject to change without notice, at developer’s absolute discretion. 4. Actual area may vary from the stated area. 5. Drawings not to scale. 6. All images used are for illustrative purposes only and do not represent the actual size, features, specifications, fittings, and furnishings. 7. The developer reserves the right to make revisions / alterations, at it’s absolute discretion, without any liability whatsoever.

3 BEDROOM

UNIT 12 | GROUND FLOOR & LEVEL 01

SUITE AREA	1710.92 SQ.FT.	158.95 SQ.M.
BALCONY AREA	377.17 SQ.FT.	35.04 SQ.M.
TOTAL AREA	2088.09 SQ.FT.	193.99 SQ.M.



FLOOR PLAN 1. All dimensions are in imperial and metric, and measured from finish to finish excluding construction tolerances. 2. All materials, dimensions, and drawings are approximate only. 3. Information is subject to change without notice, at developer’s absolute discretion. 4. Actual area may vary from the stated area. 5. Drawings not to scale. 6. All images used are for illustrative purposes only and do not represent the actual size, features, specifications, fittings, and furnishings. 7. The developer reserves the right to make revisions / alterations, at it’s absolute discretion, without any liability whatsoever.

DUBAI CREEK
HARBOUR

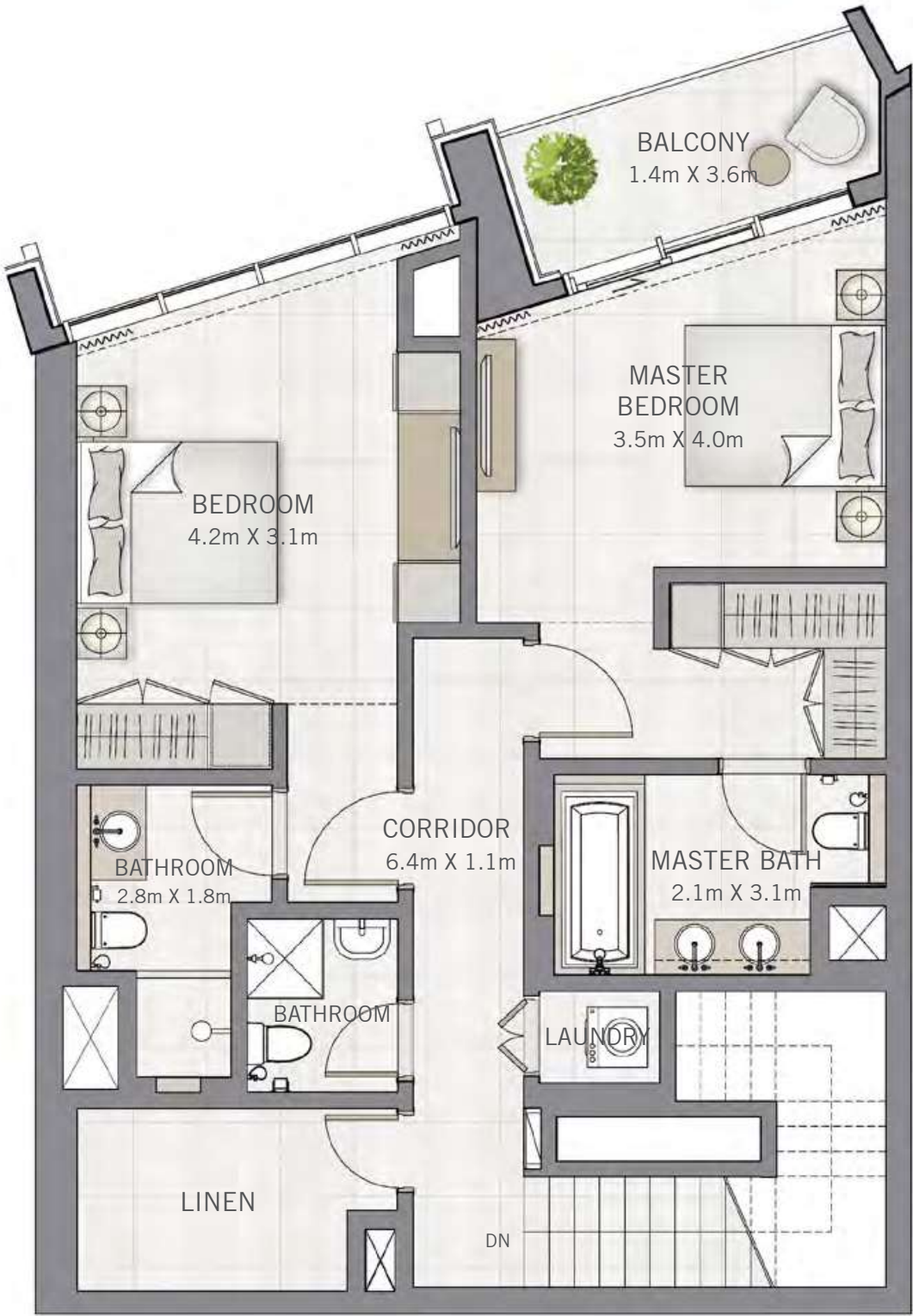
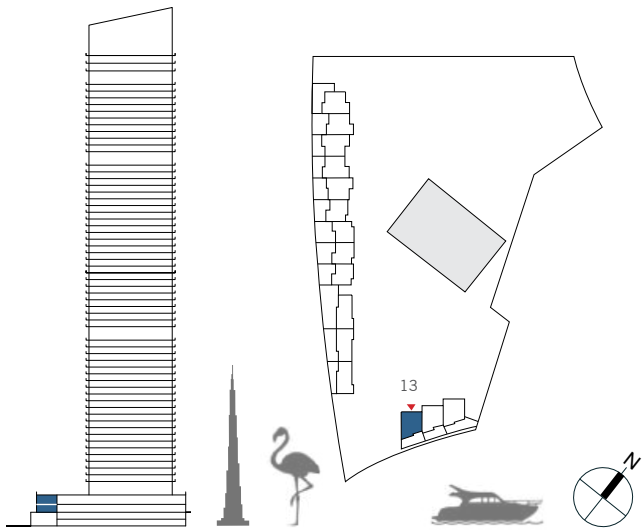
THE
GRAND

TOWNHOUSES

3 BEDROOM

UNIT 13 | GROUND FLOOR & LEVEL 01

SUITE AREA	1692.84 SQ.FT.	157.27 SQ.M.
BALCONY AREA	382.33 SQ.FT.	35.52 SQ.M.
TOTAL AREA	2075.17 SQ.FT.	192.79 SQ.M.



FLOOR PLAN 1. All dimensions are in imperial and metric, and measured from finish to finish excluding construction tolerances. 2. All materials, dimensions, and drawings are approximate only. 3. Information is subject to change without notice, at developer’s absolute discretion. 4. Actual area may vary from the stated area. 5. Drawings not to scale. 6. All images used are for illustrative purposes only and do not represent the actual size, features, specifications, fittings, and furnishings. 7. The developer reserves the right to make revisions / alterations, at it’s absolute discretion, without any liability whatsoever.



DUBAI CREEK
HARBOUR

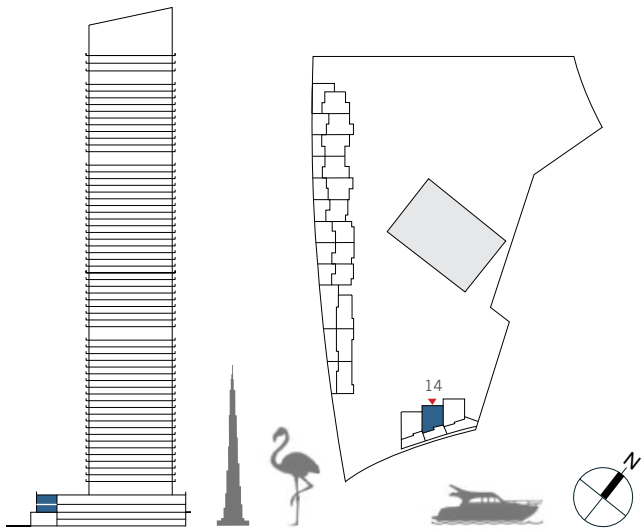
THE
GRAND

TOWNHOUSES

3 BEDROOM

UNIT 14 | GROUND FLOOR & LEVEL 01

SUITE AREA	1703.07 SQ.FT.	158.22 SQ.M.
BALCONY AREA	463.39 SQ.FT.	43.05 SQ.M.
TOTAL AREA	2166.46 SQ.FT.	201.27 SQ.M.



FLOOR PLAN 1. All dimensions are in imperial and metric, and measured from finish to finish excluding construction tolerances. 2. All materials, dimensions, and drawings are approximate only. 3. Information is subject to change without notice, at developer’s absolute discretion. 4. Actual area may vary from the stated area. 5. Drawings not to scale. 6. All images used are for illustrative purposes only and do not represent the actual size, features, specifications, fittings, and furnishings. 7. The developer reserves the right to make revisions / alterations, at it’s absolute discretion, without any liability whatsoever.



DUBAI CREEK
HARBOUR

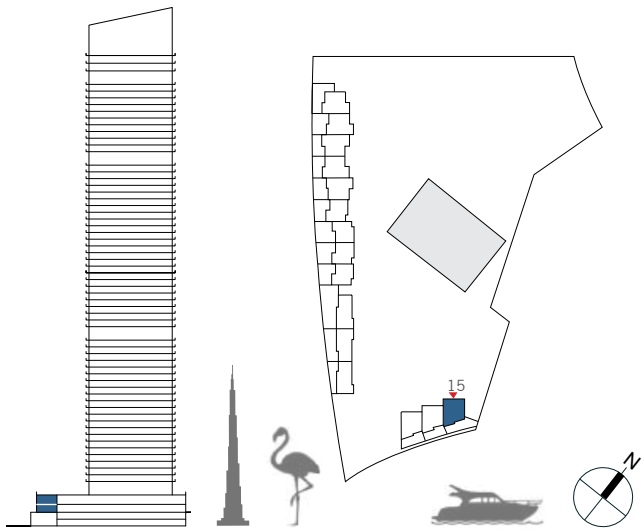
THE
GRAND

TOWNHOUSES

3 BEDROOM

UNIT 15 | GROUND FLOOR & LEVEL 01

SUITE AREA	1700.05 SQ.FT.	157.94 SQ.M.
BALCONY AREA	524.31 SQ.FT.	48.71 SQ.M.
TOTAL AREA	2224.36 SQ.FT.	206.65 SQ.M.



FLOOR PLAN 1. All dimensions are in imperial and metric, and measured from finish to finish excluding construction tolerances. 2. All materials, dimensions, and drawings are approximate only. 3. Information is subject to change without notice, at developer's absolute discretion. 4. Actual area may vary from the stated area. 5. Drawings not to scale. 6. All images used are for illustrative purposes only and do not represent the actual size, features, specifications, fittings, and furnishings. 7. The developer reserves the right to make revisions / alterations, at it's absolute discretion, without any liability whatsoever.

