



EMAAR
BEACHFRONT

BEACH ISLE

EMAAR



THERE'S NO PLACE
LIKE HOME

EXCEPT FOR
THE BEACH

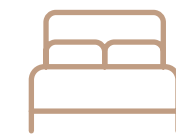


BEACH ISLE

BEACH ISLE

Where Luxury Flows

Discover the true meaning of luxury at Dubai's most exclusive island; where the blue sky is an extension of the open sea; where exceptional entertainment venues are a delightful stroll away; and time is measured by the sound of waves rolling into the shore. This is Beach Isle.



Premium
1, 2, 3 & 4-bedroom
Apartments



Luxurious
4-bedroom Villas



Private Beach
Access



Infinity-edge
Swimming Pool



Unparalleled Views
of The Palm



Uninterrupted
Views of the Sea

COME
HOME TO

YOUR OWN
BEACH RESORT



A SEA OF POSSIBILITY

Set your sights on a glorious strip of sunshine overflowing with sensational amenities.



Miami-style
Pool Deck



Tropical
Garden Rooms



Spacious
Cabanas



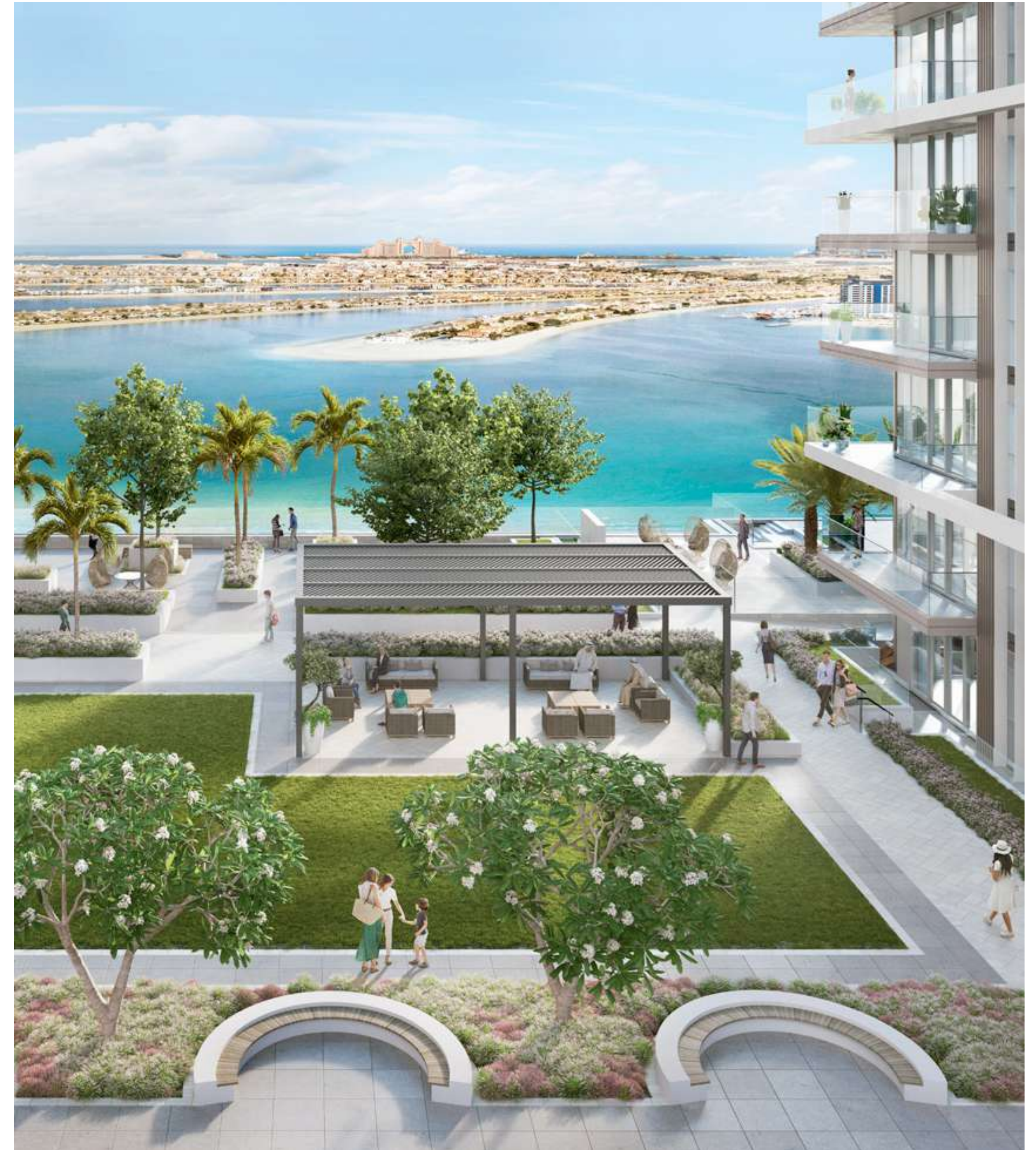
Retail Front at
Ground Level



Dedicated
Fitness Area



Kids' Splash Pads &
Play Area



THOSE WHO LIVE
LIFE ON THE EDGE

HAVE THE
BEST VIEW





EMAAR
BEACHFRONT

BEACH ISLE

Location

A WELL-CONNECTED PARADISE

The sweet life starts with a tropical breeze. And with direct access to Dubai Marina and a swift connection to Sheikh Zayed Road, your every day can only get sweeter.

IN HARMONY WITH NATURE

Light, spacious, modern. Every aspect of your Beach Isle apartment is constructed to mimic the freedom and serenity felt when your toes are in the sand and eyes are on the open water.



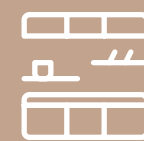
Miami Beach-inspired
Architecture



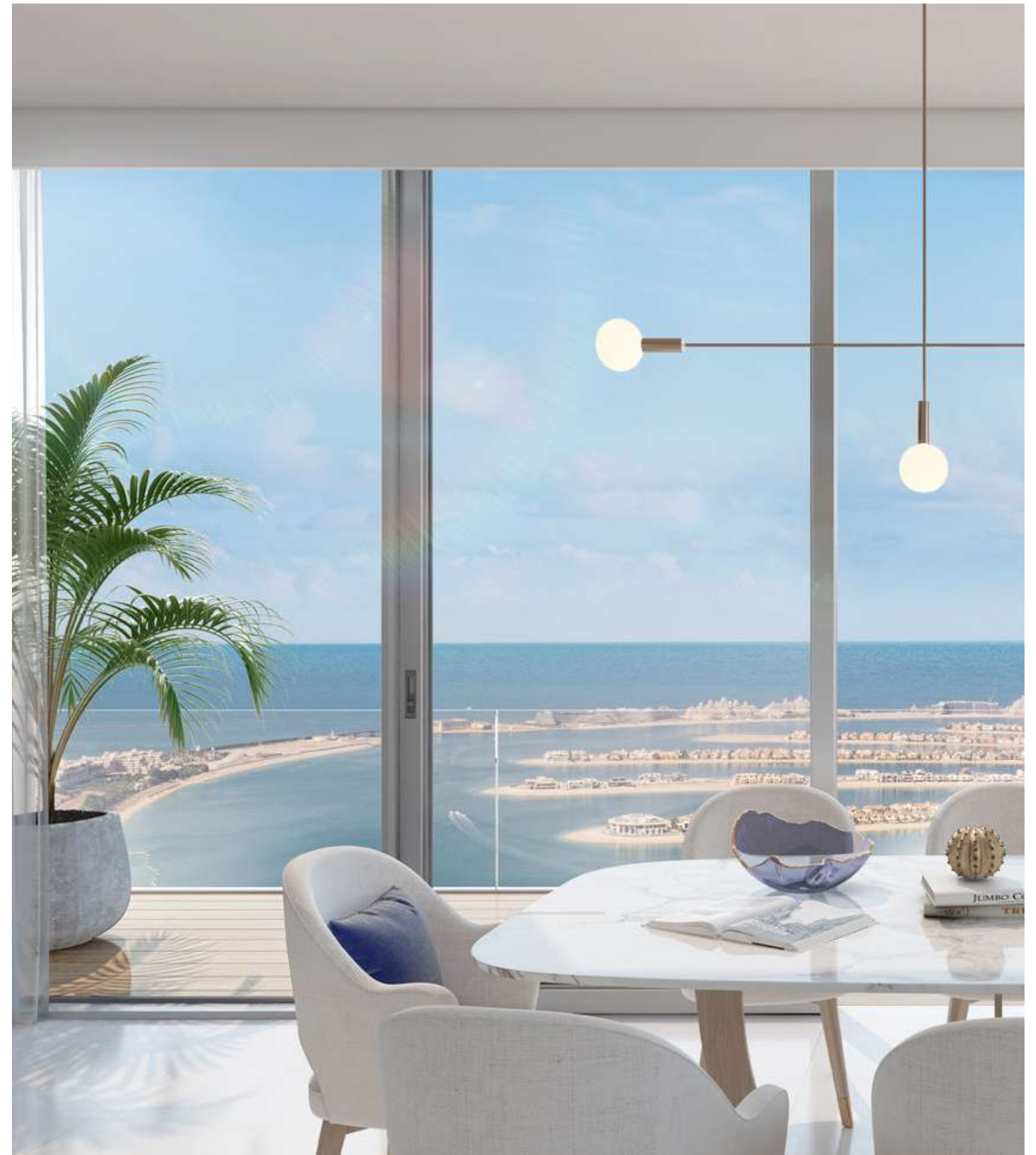
Floor-to-ceiling
Windows



Master Bedroom with
En-suite Bathroom



Open Kitchen with
Built-in Cabinets









Townhouses

THE BEACH IS YOUR FRONT YARD

Thoughtfully designed 4-bedroom family villas that balance location, luxury and functionality so that you don't have to compromise meaningful downtime.

Trade-in your work shoes for one of life's simplest, most exclusive pleasures — a barefoot stroll on the beach with loved ones.

EMAAR BEACHFRONT

Private Beach Living

Come home to Dubai's most exclusive island. Located within the new maritime centre of the UAE, Dubai Harbour, EMAAR BEACHFRONT is a meticulously master-planned waterfront haven.

A unique blend of cosmopolitan living, prime location and luxury seaside lifestyle.





FEATURES



1.5 KM of
Pristine Beach



Panoramic Views
of the Sea



Steps Away from
Marina & Yacht Club



Upcoming
Mall



Nearby Licensed
Restaurants



2 Neighbourhood
Parks

YOUR DREAM HOME, SOON TO BE A REALITY

With construction expressly underway,
Emaar Beachfront's first four towers are
scheduled for completion in August 2021*.

*Estimated completion date





FROM THE DEVELOPER OF DUBAI MARINA

Dubai's most sought-after enclave

Famous for its vibrant nightlife, exceptional dining venues and an abundance of activities that will satiate your every desire.



5-star Premium Hotel,
The Address Dubai Marina



150,000 Sqm
Marina Mall



Global Culinary Hub
Pier 7



Most Popular
Among Renters
& Buyers



50 Million Sqft
Waterfront
Community



5 Minutes from
Emaar Beachfront

THE STRENGTH OF EMAAR

An undisputed leader in the global real estate market, EMAAR has grown over the years to become the largest real estate developer outside of mainland China. You will be investing with one of the most-loved brands in the world.

REVENUE

AED

11.6BN

H1 2019

NET PROFIT

AED

3.1BN

H1 2019

MARKET CAP

AED

32BN

30 JUNE 2019

PROPERTY SALE IN UAE



52%

H1 2019

NET PROFIT MARGIN



27%

H1 2019

YOY BRAND VALUE



39%

